




# Roma Show Grounds

-  Power boxes
-  Toilets/shower
-  One way traffic

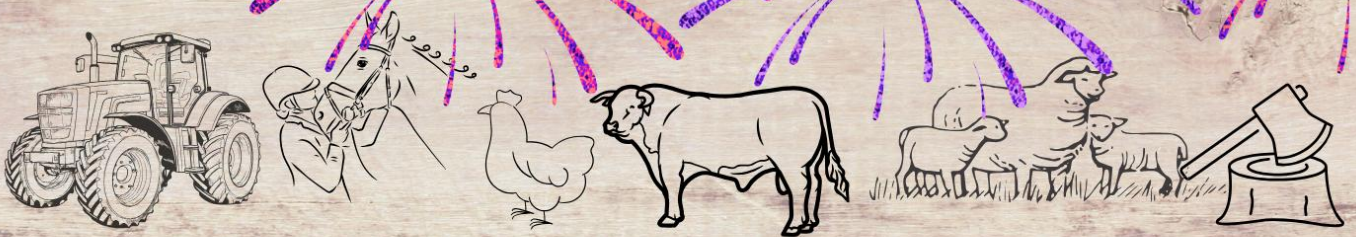
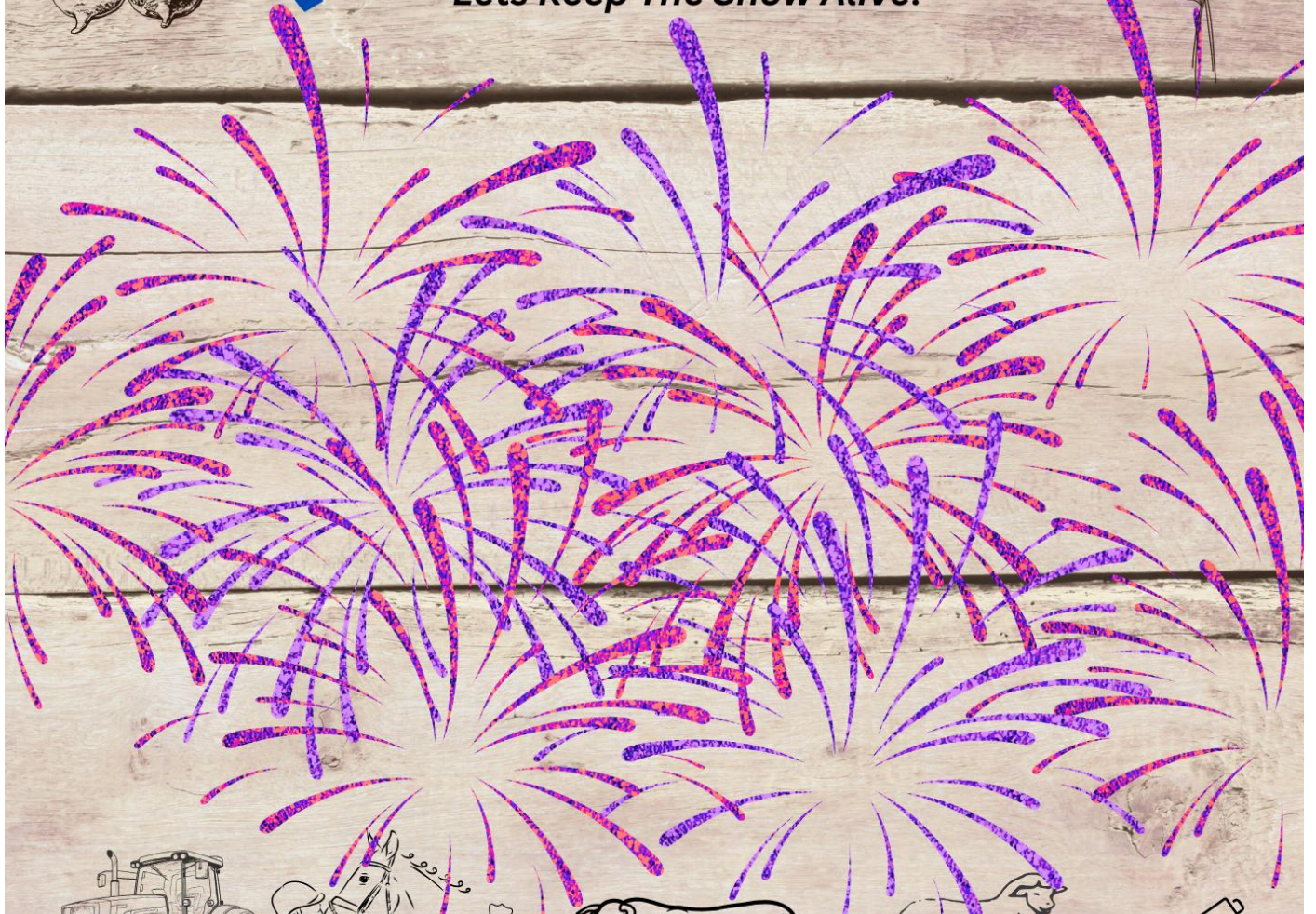


# Roma Show

# 7-9TH MAY 2026

Since 1873

Lets Keep The Show Alive!



**Horse ring events, Showjumping, Stockmens Challenge, Cattle inc Brangus Feature show, sheep, Poultry, Farm & Garden, Horticulture, Art, Crafts, Cooking, Woodchop, Farmers Challenge, Tractor Pull, Tug a War, showgirl and Rural Ambassador Competitions.**



*2 full days of entertainment, market stalls, food and rides*

# **2026 Committee:**

*Patron: Sue-Ellen Kirkbride*

*President: Geoff McMullen*

*Committee: Margaret Hetherington*

*Secretary: Julie Nixon*

*Committee: Annette Huntley*

*Vice President & Trade: Lachlan Hall*

*Committee: Mandy Watson*

*Treasurer: Joanne Stiller*

*Committee: Maxine Thomas*

**Contact: Secretary**

**Julie Nixon**

**secretary@romashow.com**

**0497 225698**

**New in 2026, all Entries are available Online.**

**Links via Roma show website**

**<https://romashow.com/>**

*Manual entry forms are also available or you can contact Julie if you require any assistance to fill out entries online.*

**Showjumping: <https://nominate.com.au/>**

**Woodchop: <https://www.revolutionise.com.au/qaa/events/346208>**

**All other Entries via: <https://showday.online/show/roma>**

**All gate and ladies dinner.**

**made via: <https://www.trybooking.com/DLOMU>**

**Disclaimer:**

*Whilst every care has been taken in the preparation of this Schedule, the Roma Show Society accepts no liability for any errors, omissions or misprints. The Committee reserves the right to correct any errors and alter the Schedule where circumstances require.*

Join us for a special evening, dedicated to the mental health and wellbeing of the...



# Women of the West Roma Dinner

Inspiring guest speakers, discussion, connection, community spirit and dinner!

**MC: Aleacea Nixon**



2025 Queensland Country Life Showgirl winner and 2025 Roma Showgirl, proudly representing rural leadership and youth voice, Aleacea will be your MC.

**Guest Speaker: Shanna Whan AM**



Founder and CEO of *Sober in the Country* and 2025 Order of Australia medalist, leading a national movement championing wellbeing and the message that it's always OK to say no to booze.

**Guest Speaker: Anne Galloway**



Respected Roma cattiewoman, nurse and community contributor, with decades of involvement in the Roma Show and rural women's leadership.

**Expert Panellists**  
**Emily Gorkow:** South West Hospital & Health Service TRACC Regional Adversity Clinician.  
**Felicia Lin:** Drug ARM Community Educator – also sharing inclusive mocktail options.

**\*Ticket includes:**  
 Dinner and a free glass of alcoholic OR non-alcoholic champagne on entry.  
**Raffle & Lucky Door Prizes will be run by the showgirls**  
 Please forward any enquiries including food allergies to:

[secretary@romashow.com](mailto:secretary@romashow.com)  
 0497 225 698

*Let's come together to lift each other up!*

**6:00 PM**  
 Thursday 7 May 2026

**Bassett Park**  
 Members Bar Area  
 Northern Road, Roma

**Tickets\***  
 Members: \$40 per  
 Non-members: \$45 person

**Limited Tickets: BOOK NOW**  
 RSVP BY 4 May 2026 to:  
[secretary@romashow.com](mailto:secretary@romashow.com)  
 0497 225 698





**Thursday night at the members bar**

Tickets on sale click here :<https://www.trybooking.com/DLOMU>

## Friday morning at the members bar

### 2026 ROMA SHOW MEN'S BREAKFAST

★★★★★ Friday, May 8 2026 ★★★★★

Breakfast 8am underneath Member's Bar Bassett Park.

Followed at 8.30am by guest speaker  
Matt Golinski in the upstairs bar.

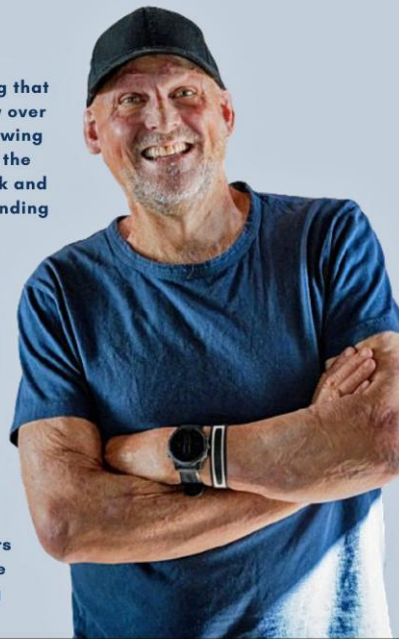
#### Matt Golinski

Matt is a professional chef with a love of cooking that began as a child and has only continued to grow over a lifetime spent in kitchens. His passion for knowing the provenance of the ingredients he uses and the people who grow them has defined him as a cook and is the driving force behind his creativity and unending enthusiasm for food.

Well known as one of the original team members of the popular 'Ready Steady Cook' television series, Matt has worked as executive chef at some of Queensland's leading restaurants over his 35-year career.

Based on Queensland's Sunshine Coast, Matt now enjoys working as a consulting chef to restaurants, being a regular guest chef at regional festivals and events and writing food articles for InNoosa and Hello Sunshine magazines.

Matt lives with his wife and two young daughters on their property in the Noosa hinterland, where his focus has turned to learning about growing the food he loves to cook.



Show Members Price \$25;  
Non Members Price \$40 (includes Show Entry)  
TICKETS - Please ring Show Secretary (Julie Nixon)  
0497 225 698 or [secretary@romashow.com](mailto:secretary@romashow.com)  
Tickets close off at COB Monday, May 4  
Enquiries Puddy 0429 160 004  
Strictly Men Only



For tickets contact Julie via email: [secretary@romashow.com](mailto:secretary@romashow.com)

Matt will also be hosting a cooking demonstration on Friday after the conclusion of the Men's Breakfast speeches underneath the members bar.

# CALLING ALL ENTRIES!

## ROMA SHOWGIRLS

MINI, JUNIOR, TEEN & SHOWGIRL



Photo courtesy of QLD Country Life

DO YOU HAVE A  
PASSION FOR ROMA?

## ENTER NOW!

- **Mini** (6-9 Years old)
- **Junior** (10-13 Years old)
- **Teen** (14-17 years old)
- **Showgirl** (18-28 years old)

**RURAL AMBASSADOR  
ENTRANTS  
WELCOME**



All enquiries to Tracy Lynch

Email: [tracylyn67@hotmail.com](mailto:tracylyn67@hotmail.com)

*Roma show society would like sincerely thank all our sponsors, stewards and volunteers, big and small for their generous support of the 2026 Roma show.*

**The Roma show is proudly supported by the Queensland Government through the Show Societies Grants Program**

**DELIVERING  
FOR QUEENSLAND**



**Queensland  
Government**



**maranoa**  
REGIONAL COUNCIL

### **Acknowledgement of Sponsors**

The Roma Show Society extends its sincere thanks to all of our valued sponsors for their generous support.

From our major sponsors to the many local businesses, organisations, and individuals who contribute in ways both big and small—your support makes this event possible. Without your ongoing commitment and community spirit, the Roma Show simply could not go ahead.

Your contributions help us celebrate our region's rich agricultural heritage, support local talent, and bring our community together year after year.

We are incredibly grateful for your partnership and continued belief in the Roma Show.

**Your support is truly invaluable.**

# ENTERTAINMENT

## FRIDAY & SATURDAY:

➤ *Face painting, bubbles, stilt walker by Big top entertainment*



➤ **Walter Whip**



➤ Melville's famous racing ducks and petting zoo

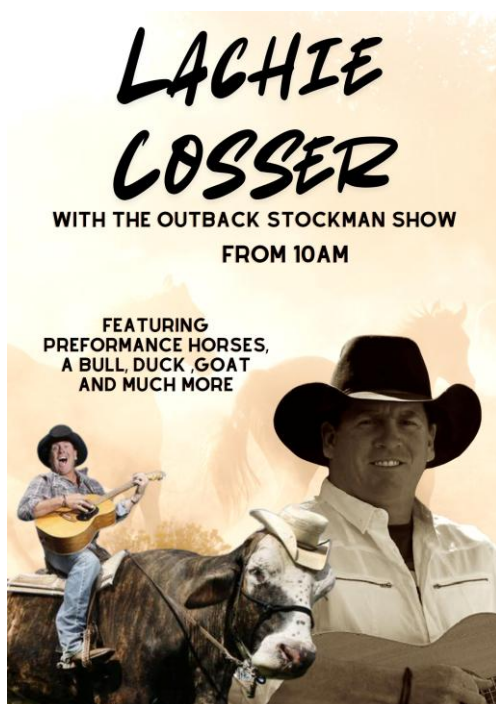
➤ *Dog High jump entertainment and competition. (bring your dog and see who has the local dog jump Champion)*

➤ **Chainsaw Carving**

➤ **Kids Entertainment by QLD Reds and Santos**

➤ **LOCHIE COSSER AND THE OUTBACK STOCKMAN SHOW**

➤ **BAR OPEN FROM 12noon till late**



# **SECTION 1a - Equestrian Ring**

## **Schedule 2026**

CHIEF STEWARD: Alanah Ladbrook

Email: horses@romashow.com

### **ENTRIES:**

Ring 1 and Ring 2 \$4.00 per entry via Showday prior to 6<sup>th</sup> May or \$6.00 to be paid on the day  
Ring 3 \$2.00 per entry – paid on the day

### **RIBBONS, TROPHIES AND PRIZE MONEY:**

(Unless otherwise specified)

First: \$15.00

Second: \$10.00

Third: \$5.00 OR product to that value

### **RULES & REGULATIONS:**

In addition to the Roma Show Society Rules & Regulations listed at the front of the main schedule, the following will apply to this section.

The Chief Steward shall have the final say in all decisions regarding any event and entrance into events.

The Chief Steward can alter or remove any event within the 2026 Roma Show program.

Any competitor or persons associated displaying disruptive or offensive behavior at the discretion of the Chief Steward will be asked to leave the grounds immediately and excluded from participating in any further events.

Roma Show Ring Events are conducted within the relevant Biosecurity requirements / guidelines. All competitors must complete all Biosecurity documentation prior to competing. These are available in the Documents and Download section on Showday Online.

1. No Stallion shall be allowed on the grounds without a bit or chain, and handler must be over 17 years of age.
2. Any horse mounted or ridden by a judge for the duration of the Roma Show 2026, other than when the horse is competing in an event in an arena will be disqualified from further competition.

### **Nominations**

3. Nominations will be by ticket system.
4. Tickets will be available from the ringside ticket office on the grounds from Thursday 7th May 2026.
5. Choose carefully NO REFUND given on pre-nomination or on the day nominations without a veterinary or medical certificate.
6. A Ticket to the value of the entry fee (inclusive GST) must accompany each nomination for each event.
7. Entry to judging arena for any event will be solely by ticket handed to the steward.

### **Marshalling**

8. First call for competitors in any event will be five minutes before the program scheduled time (if any) for the event.
- 8a. It is the responsibility of each competitor to ensure that they are wearing the correct coloured arm band with the

verification of Horse Health Declaration & Movement Form submitted.

9. Interested competitors should assemble with their horses in the marshalling area just outside the gate entry to the judging arena in time to hear the first call for their event.

10. Second call for competitors in any event will be to signal entry to the judging arena and hand tickets to stewards.

11. Completion of Second Call and at the discretion of the Gate Steward, he will secure the gate and advise the On Chief Steward that all interested competitors have now entered the arena and judging may commence. All horses are to exit through the marked gates, exiting horses have right of way. All entering horses must wait until exiting horses are through the gate. This is in the interest of competitor's safety.

12. A 'Newcomer' is a Pony, Galloway, Hack or Horse that has not competed under saddle at any show or competition (except for racing) prior to 1 July 2021. Winners of Newcomer classes are not eligible for Champion.

13. A 'Maiden' is a Hack, Galloway or Pony that has not won a hack class in competition at an affiliated show. After winning a maiden hack class this horse will be recognised as a Novice (Ring 1&2).

14. A 'Novice' is a Hack, Galloway or Pony that has not won an Open Championship at an Agricultural Show or a first at a Royal or HOTY in hack classes (Ring 1&2).

15. An 'Intermediate' is a horse that has not won a first, second or third in a similar event at a Royal Show. Hacks

16. The height of Hacks at the Roma Show shall be over 15 hands. All Hacks must be measured and be able to produce an official height certificate.

### **Galloways**

17. The height of Galloways at the Roma Show shall be over 14 hands, up to and including 15 hands. (Any horse measuring exactly 14 hands is a Pony for this Show: any Horse measuring exactly 15 hands is a Galloway for this Show). Ladies Galloway and Ladies Hack must be ridden by Lady 17 years and over. Gents Galloway and Gents Hack must be ridden by Gents 17 years and over.

### **Ponies**

18. The height of pony for District/Novice/Open pony hack classes at the Roma Show shall be up to and including 14hh. All ponies must be able to produce an official height certificate.

19. All ponies under 12.2 hds must be ridden by a child under 17 years.

### **District Qualification**

20. All persons and horses must reside, and upon proof thereof, for at least three calendar months prior to May 2026 in the Maranoa Regional Council, are eligible to compete in all District events.

21. Residents of fringe areas of the above Shires and Town not classified as district competitors for any other Show may, on written application to the Roma Show Society Inc. be approved as District competitors for the 2026 Roma Show. Any such approval must be produced on demand.

### **Led Classes**

22. In all Led Breed Classes papers, proof of age, breeding, registration, and membership MUST BE PRODUCED on demand by the Chief Steward or Steward in charge of the ring.

23. Any horse that is dual registered may compete in one or more classes as long as the horse is registered with that association and that association approves.

#### **Protests**

24. In the event of a dispute, the Rules of the Queensland Chamber of Agricultural Societies shall apply.

25. The Ring Master shall have the power to ban from competition any competitor whose behaviour to a Judge and/or Steward is considered offensive by the Judge, Steward or Ring Master.

26. Persons must lodge protests with \$100 bond which will be forfeited if protest is turned down and refunded if protest upheld.

#### **Age**

27. If requested by Stewards, children must be able to produce proof of age in Classes with age barriers, by producing an original copy of a Birth Certificate.

#### **Measuring**

28. All horses are required to be measured by a Steward. When measuring, an allowance of one half of an inch is to be made for shoes. Where an exhibitor disagrees with the Official Measurer's height for a horse which has been measured with shoes on, he may, should he so desire have it re-measured without shoes.

29. Times for measuring will be on display at the temporary office at the horse section.

#### **Horse Stalls**

30. HORSE STALL PAYMENT MUST BE MADE IN FULL BEFORE STABLES ARE ALLOCATED.

31. There are a limited number of stables.

Camping and stabling are online via showday online, link on [www.romashow.com](http://www.romashow.com) and can be completed and e-mailed to [horses@romashow.com](mailto:horses@romashow.com) prior to payment

No applications will be taken prior to 1st February 2026.

No armband, no competition

32. All Show Horse stabling enquiries should be to [secretary@romashow.com](mailto:secretary@romashow.com)

33. Upon arrival on the grounds, please check to find stable allocations on each stable row.

34. NO REFUND GIVEN without vet or medical certificate

35. No straw is allowed in the stables – bedding will be provided.

36. Local horses (within 35km radius) will only be allocated when all traveling horses have been accommodated.

#### **Camping**

37. All exhibitors who desire to live on the grounds must place their truck or caravan in the allotted camping area. This will be at a cost of \$44.00 for the duration of the Show Any exhibitor refusing to abide by these instructions may be ejected from the grounds and disqualified from further participation in the Show. The Society notifies that it intends to enforce this rule strictly. Toilet and Shower facilities are provided, and electricity is available.

38. All competitors must either be members or pay through the gate. Arm bands will be issued. No band no competing!

#### **Working Australian Stock Horses**

39. Working ASH classes are to be ridden in a snaffle bit. Competitors competing in Classes 7-11 & 38-45 must be current members of the ASH Society Show & Working Hunter Classes (153-174)

40. Horses must either compete in the Hunter Ring or Open Hack or Pony Hack Ring (Saturday), they may not compete in both (with the exception of district hack classes).

41. Classes 172-174 will be judged as per the guidelines Refer to the 'Guide to Working Hunter Classes' as set out on website:- [www.hunterhorses.com.au](http://www.hunterhorses.com.au) (Rules and Regulations tab) before entering this ring.

42. Stallions are eligible to compete (handler/rider must be over 17 years)

43. Newcomers see rule 12

44. Hunter Ponies over 12.2 hands may be ridden by an adult

45. A 'Novice' is a horse, Galloway or pony that has never won a first place in a similar event in the Open Ring of a Hack, Breed or Agricultural Show

46. An 'Intermediate' is a horse or rider that has not won a first, second or third in a similar event at any Royal. Fashions Off The Track Classes (175-179)

47. All entries must show horses using their Registered Racing Name including their Microchip #.

48. Competitors Declaration - All competitors and exhibitors have read and understand the Rules and Regulations and agree to be bound in all respects by these Rules and Regulations. Competitors and exhibitors also consent and agree that the Roma Show Society has the right to take or use photographs of him or her (and/or your property) and use the photos in any and all marketing and media worldwide, including online, now and in the future. All entrants compete at their own risk. No claim in any form shall be made by the entrant, their families, friends and/or representative against the Roma Show Society or person/s associated with the holding of the competition/exhibit.

## **RING 1 – Friday**

8.30am Start

### **Led Thoroughbreds**

sponsored by ROMA TURF CLUB

PRIZE MONEY: 1st: \$20; 2nd: \$15; 3rd: \$10

Class 1 Led Thoroughbred Male Exhibit ne 16 hands

Class 2 Led Thoroughbred Male Exhibit over 16 hands

Class 3 Led Thoroughbred Female Exhibit ne 16 hands

Class 4 Led Thoroughbred Female Exhibit over 16 hands

CHAMPION LED THOROUGHBRED - \$50

ROMA TURF CLUB

RESERVE CHAMPION LED THOROUGHBRED - \$20

- ROMA TURF CLUB

### **Led Standardbreds**

Standardbreds sponsored by ROMA TURF CLUB

PRIZE MONEY: 1st: \$20; 2nd: \$15; 3rd: \$10

Class 5 Led Standardbred Male Exhibit

Class 6 Led Standardbred Female Exhibit

CHAMPION LED STANDARDBRED - \$50

- ROMA TURF CLUB

RESERVE CHAMPION LED STANDARDBRED - \$20

- ROMA TURF CLUB

### **Led Australian Stock Horses**

sponsored by: D & W Transport

All prizemoney for Stockhorse classes will be-

First \$20 Second \$15 Third \$10

Class 7 Australian Stock Horse Stallion or Colt

Class 8 Australian Stock Horse Gelding under 4 years

Class 9 Australian Stock Horse Gelding 4 years and over

Class 10 Australian Stock Horse Filly under 4 years

Class 11 Australian Stock Horse Mare 4 years and over

CHAMPION LED AUSTRALIAN STOCK HORSE - \$50

RESERVE CHAMPION LED AUSTRALIAN STOCK HORSE - \$20

### **Led ANSA**

Class 12 ANSA Male ne 15.2 hands

Class 13 ANSA Gelding over 15.2 hands

Class 14 ANSA Mare or Filly ne 15.2 hands

Class 15 ANSA Mare or Filly over 15.2 hands

CHAMPION LED ANSA

RESERVE CHAMPION LED ANSA

### **Led Warmbloods**

Class 16 Warmblood Male Exhibit

Class 17 Warmblood Female Exhibit

CHAMPION LED WARMBLOOD EXHIBIT

RESERVE CHAMPION LED WARMBLOOD EXHIBIT

### **Led Arabians (Derivatives & Part-bred Eligible)**

Class 18 Arabian Male Exhibit

Class 19 Arabian Female Exhibit

CHAMPION LED ARABIAN EXHIBIT

RESERVE CHAMPION LED ARABIAN EXHIBIT

Led Quarter Horses

Class 20 Quarter Horse Male exhibit

Class 21 Quarter Horse Mare or Filly

CHAMPION LED QUARTER HORSE

RESERVE CHAMPION LED QUARTER HORSE

### **Led Coloured Breeds**

-Paint, Pinto, Appaloosa, Palomino, Buckskin, Dun. Dilute Ancillary Horses are not accepted. 4 or more entries of one colour, a separate class will be run

Class 22 Coloured Male Exhibit

Class 23 Coloured Female Exhibit

CHAMPION COLOURED EXHIBIT

RESERVE CHAMPION COLOURED EXHIBIT

### **Led Any other breed or registration not listed**

(Must be over 14 hands and must not have started in a led class at this show)

Class 24 Any other breed or registered Male Exhibit

Class 25 Any other breed or registration Female Exhibit

CHAMPION LED ANY OTHER BREED

RESERVE CHAMPION LED ANY OTHER BREED

### **RIDDEN District Lady and Gentlemen Riders**

Class 26 District Gentleman Rider - TROPH

Class 27 District Lady Rider – TROPHY

RIDDEN District Hacks

Class 28 District Maiden Hack

Class 29 District Hack – rider under 18 years

Class 30 District Hack – under 16 hands

Class 31 District Hack – 16 hands & over

Class 32 District Off the Track Hack - eligible for Champion

CHAMPION DISTRICT HACK CJ & EK Boyce Memorial Trophy  
RESERVE CHAMPION DISTRICT HACK

### **Ridden District Galloway Hacks**

Class 33 Maiden District Galloway Hack

Class 34 District Galloway Hack – riders under 18 years

Class 35 District Galloway Hack – over 14 hands and ne 14.2 hands

Class 36 District Galloway Hack – over 14.2 hands and ne 15 hands

CHAMPION DISTRICT GALLOWAY HACK  
RESERVE CHAMPION DISTRICT GALLOWAY HACK  
SUPREME DISTRICT HACK

RIDDEN District Galloway Hacks

RIDDEN ANSA Horses under Saddle

Class 38 ANSA Female under saddle

Class 39 ANSA Male under Saddle

CHAMPION ANSA UNDER SADDLE  
RESERVE CHAMPION ANSA UNDER SADDLE

### **Thoroughbred under Saddle**

– Sponsored by COHO RESOURCES

PRIZE MONEY: 1st: \$30; 2nd: \$20; 3rd: \$10

Class 40 Thoroughbred Mare under saddle

Class 41 Thoroughbred Gelding or Stallion under saddle

CHAMPION RIDDEN THOROUGHBRED - \$50  
COHO RESOURCES  
RESERVE CHAMPION RIDDEN THOROUGHBRED - \$20  
COHO RESOURCES

### **Standardbreds under Saddle**

(as per Thoroughbreds PRIZE MONEY) -

Sponsored by COHO RESOURCES

Class 42 Standardbred Mare under saddle

Class 43 Standardbred Gelding or Stallion under saddle

CHAMPION RIDDEN STANDARDBRED - \$50  
RESERVE CHAMPION RIDDEN STANDARDBRED - \$20

## COHO RESOURCES

### **RIDDEN Working Australian Stock Horses**

Sponsored by Elders, Roma

Class 44 ASH Hack under 4 years

Class 45 ASH Hack 4 years and over

Class 46 ASH Hack ridden by a junior ASH member

CHAMPION AUSTRALIAN STOCKHORSE HACK - \$50

RESERVE CHAMPION AUSTRALIAN STOCKHORSE HACK - \$20

Class 47 Working Australian Stock Horse Stallion or Gelding under 4 years

Class 48 Working Australian Stockhorse Stallion or Gelding 4 years and over

Class 49 Working Australian Stockhorse Mare or Filly under 4 years

Class 50 Working Australian Stock Horse Mare 4 years and over

Class 51 Working Stock Horse ridden by a Junior ASH Member

CHAMPION WORKING AUSTRALIAN STOCKHORSE - \$50

RESERVE CHAMPION AUSTRALIAN STOCKHORSE - \$20

### **Australian Saddle Pony Under Saddle**

Class 52 Saddle Pony under Saddle – under 13.2 hands

Class 53 Saddle Pony under Saddle – 13.2hands and ne 14.2 hands

CHAMPION AUSTRALIAN SADDLE PONY under SADDLE

RESERVE CHAMPION AUSTRALIAN SADDLE PONY under SADDLE

### **RIDING Pony Under Saddle**

Class 54 RIDING Pony ne 12.2 hands

Class 55 RIDING Pony 12.2 hands ne 13.2 hands

Class 56 RIDING Pony 13.2 hands ne 14.2 hands

CHAMPION RIDING PONY under SADDLE

RESERVE CHAMPION RIDING PONY under SADDLE

## **RIDDEN WELSH Classes (part bred eligible)**

Class 57 RIDDEN WELSH Pony ne 13.2 hands

Class 58 Ridden WELSH PONY over 13.2 hands

CHAMPION RIDDEN WELSH EXHIBIT

RESERVE CHAMPION RIDDEN WELSH EXHIBIT

## **RING 2 – Friday PONY EVENTS LED & RIDDEN**

**8.30am Start**

### **Led Ponies not Registered Riding Pony, Saddle Pony or Welsh Pony**

Class 59 Pony Stallion or colt

Class 60 Pony Gelding – ne 13 hands

Class 61 Pony Gelding – 13 hands and ne 14 hands

CHAMPION LED PONY MALE EXHIBIT

+ Trophy – Sponsored by The RIEHL Family

RESERVE CHAMPION LED PONY MALE EXHIBIT

Class 62 Pony Mare – ne 13 hands

Class 63 Pony Mare – 13 hands and ne 14 hands

CHAMPION LED PONY FEMALE EXHIBIT

+ Trophy – Sponsored by The RIEHL Family

RESERVE CHAMPION LED PONY FEMALE EXHIBIT

### **Led Riding Ponies**

Ponies must be registered with the Riding Pony Association.

Class 64 Riding Pony Junior Colt, Gelding or Filly Exhibit – 3yrs & under (not eligible class 59-61)

Class 65 Riding Pony Mare

Class 66 Riding Pony Gelding

CHAMPION RIDING PONY

RESERVE CHAMPION RIDING PONY

### **Led Australian Saddle Ponies**

Owners to be current financial members of Australian Saddle Pony Association.

Class 67 Australian Saddle Pony Under 13.2 hands

Class 68 Australian Saddle Pony 13.2 hands – ne 14.2 hands

CHAMPION LED AUSTRALIAN SADDLE PONY

RESERVE CHAMPION LED AUSTRALIAN SADDLE PONY

### **Led Welsh Ponies**

Class 69 Led Welsh/Part Welsh Junior exhibit - 3 years & under

(not eligible classes 70-73)

Class 70 Led Welsh Male exhibit

Class 71 Led Welsh Female exhibit

Class 72 Led Welsh Part-bred Male exhibit

Class 73 Led Welsh Part-bred Female exhibit

CHAMPION WELSH PONY

RESERVE CHAMPION LED WELSH PONY

### **District Child Riders – Sponsored by AJ LUCAS**

Class 74 District Girl + Boy Rider – 8 years and under

Class 75 District Girl + Boy Rider – 9 to 11 years

Class 76 District Girl + Boy Rider – 12 to 16 years

Class 77 District Girl + Boy Rider – 16 and under 18 years

CHAMPION DISTRICT CHILD RIDER

RESERVE CHAMPION DISTRICT CHILD RIDER

### **Ladbrook's Pony Stud District Events**

Class 78 Maiden District Pony Hack

Class 79 District Pony Hack – ne 13 hands

Class 80 District Pony Hack – over 13 hands and ne 14 hands

CHAMPION DISTRICT PONY HACK - Eldorado  
Trophy

RESERVE CHAMPION DISTRICT PONY HACK

**Child Rider Smartest on Parade Classes  
sponsored by AJ LUCAS**

Class 81 Girl Rider under 12 years

Class 82 Boy Rider under 12 years

Class 83 Girl Rider 12 years and under 18  
years

Class 84 Boy Rider 12 years and under 18  
years

Child Rider Classes sponsored by AJ LUCAS

Class 85 Girl + Boy Rider – 6 and under 8  
years

Class 86 Girl + Boy Rider – 8 and under 10  
years

Class 87 Girl + Boy Rider – 10 and under 12  
years

CHAMPION JUNIOR CHILD RIDER

RESERVE CHAMPION JUNIOR CHILD RIDER

Class 88 Girl + Boy Rider – 12 years and  
under 15 years

Class 89 Girl + Boy Rider – 15 years and  
under 18 years

CHAMPION SENIOR CHILD RIDER

RESERVE CHAMPION SENIOR CHILD RIDER

**Newcomer Pony Hack**

Class 90 Newcomer Pony Hack – not  
eligible for champion

**Novice Pony Hacks**

Class 91 Maiden Pony Hack

Class 92 Novice Pony Hack – under 13  
hands

Class 93 Novice Pony Hack –13 hands and  
not exceeding 14 hands

CHAMPION NOVICE PONY HACK

RESERVE CHAMPION NOVICE PONY HACK

**Pony Hacks**

Class 94 Intermediate Pony Hack under 14  
hands

Class 95 Pony Hack – ne 12.2 hands

Class 96 Pony Hack – over 12.2 hands and  
ne 13 hands

Class 97 Pony Hack – over 13 hands and ne  
13.2 hands

Class 98 Pony Hack - over 13.2 hands and  
ne 14 hands

CHAMPION PONY HACK - \$75

+ Trophy Rug Sponsored by BLACK TRUCKS & AG

RESERVE CHAMPION PONY HACK - \$25

## **RING 3 – Beginner Ring**

**9:00am start**

This ring is for beginners and less experienced  
riders to learn and have fun. Please compete in  
the spirit with which it was  
intended.

Riders competing in ring 3 are not eligible to  
compete in the open ring with the exception of  
ponies and horses that may  
enter breed classes. Not for riders over 14 years.

**Lead Rein**

for children on lead rein.

Class 99 Smartest On Parade - Led

Medallions ONLY - NO Prize Money

Pony/Horse & Rider on a lead rein.

Class 100 Showmanship – Led

Judged on the child's ability to present their  
horse/pony in a led situation

Pony/Horse shown by a child who is still on a lead  
rein.

Class 101 Rider under 6 years (to be led)

Class 102 Pony Hack ne 14 hands

Class 103 Horse over 14 hands

Class 104 Quietest Pony/Horse

Class 105 Fattest Pony/Horse

Class 106 Hairiest Pony/Horse

Class 107 Fastest Carrot Eater Halter only.

## **INDEPENDENT RIDERS**

(Parents may be close by)

Class 108 Smartest on Parade

Medallions ONLY - NO Prize Money

Class 109 Showmanship- Led

Judged on Childs ability to show led horse

Class 110 Rider under 6 years

Class 111 Rider 6 years and under 8 years

Class 112 Rider 8 years and under 14 years

Class 113 Pony Hack – ne 12 hand

Class 114 Pony Hack over 12 hands & ne 14 hands

Class 115 Galloway/Hack over 14 hands

Class 116 Pony 14 hands and under

Class 117 Quietest Pony/Horse

Class 118 Fattest Pony/Horse

Class 119 Hairiest Pony/Horse

Class 120 Fancy dress on horseback – child under 7 years

Fancy Dress on Horse Back to be run at the completion of events. Break of 30 minutes.

Class 121 Fancy dress on horseback – child 7 years & over

Fancy Dress on Horse Back to be run at the completion of events. Break of 30 minutes.

Class 122 Fastest Carrot Eating Horse/Pony (halter only)

## **RING 1 – Saturday - Adult Rider & Hack Classes**

**8.30am Start**

**ADULT RIDERS** Smartest on Parade

Class 123 Adult Rider 17 years and over Lady and Gentleman Riders

Class 124 Senior Lady or Gent Rider – over 50 years

Class 125 Gent rider – 18 years and over

Class 126 Lady rider – 18yrs to 25 years

Class 127 Lady rider – over 25 years

CHAMPION ADULT RIDER

RESERVE CHAMPION ADULT RIDER

SUPREME RIDER OF THE SHOW

Class 133 Open Galloway Hack – over 14 hands & ne 14.2 hands

Class 134 Open Galloway Hack – 14.2 hands & ne 15 hands

Class 135 Lady's Galloway Hack

Class 136 Gentlemen's Galloway hack

Class 137 Juvenile Galloway Hack (rider 18 years & under)

CHAMPION GALLOWAY HACK - \$75

Trophy Rug Sponsored by BLACK TRUCKS & AG

RESERVE CHAMPION GALLOWAY HACK- - \$25

Class 138 Pleasure Galloway Hack

### **Newcomer & Novice Galloway Hacks**

Class 128 Newcomer Galloway Hack – not eligible for champion

Class 129 Maiden Galloway Hack

Class 130 Novice Galloway Hack – Lightweight

Class 131 Novice Galloway Hack – Heavyweight

CHAMPION NOVICE GALLOWAY HACK

RESERVE CHAMPION NOVICE GALLOWAY HACK

### **Newcomer & Novice Hack**

Class 139 Newcomer Hack – not eligible for champion

Class 140 Maiden Hack

Class 141 Novice Hack – Lightweight

Class 142 Novice Hack – Heavyweight

CHAMPION NOVICE HACK

RESERVE CHAMPION NOVICE HACK

### **Galloway Hacks**

Class 132 Intermediate Galloway Hack any height

### **Open Hacks**

Class 143 Intermediate Hack any height

Class 144 Hack – over 15 hands and ne 15.2 hands

Class 145 Hack – over 15.2 hands and ne 16 hands

Class 146 Hack – over 16 hands  
Class 147 Roma Turf Club - for OTT  
Thoroughbred

### **Hacks over 14 hands**

Eligible for Champion Hack if over 15 hands (First - \$60, Second - \$40, Third - \$30) Sponsored John Binks & Sharon Bruce  
Class 148 Lady's Hack

Class 149 Gent's Hack  
Class 150 Juvenile Hack – child under 18 years  
CHAMPION HACK - \$150  
RESERVE CHAMPION HACK - \$50  
Class 151 Pleasure Hack  
Class 152 Pair Hacks/Galloways  
Pairs

## **RING 2 – Saturday - Show & Working Hunter Classes**

**8.30am Start**

**REFER RULES 40-46 BEFORE ENTERING THIS RING**

### **Led Show Hunters**

Class 153 Led Show Hunter Pony  
Class 154 Led Show Hunter Galloway  
Class 155 Led Show Hunter Horse  
CHAMPION LED SHOW HUNTER  
RESERVE CHAMPION LED SHOW HUNTER

### **Smartest on Parade**

Class 156 Show Hunter Pony, Galloway,  
Horse & Rider

### **Show Hunter Pony**

Class 157 Newcomer Show Hunter Pony  
ne 14 hands  
Class 158 Intermediate Show Hunter Pony  
ne 14 hands  
Class 159 Open Show Hunter Pony ne 13  
hands  
Class 160 Open Show Hunter Pony over 13  
hands & ne 14hands  
Class 161 Childs Show Hunter Pony ne 14  
hands  
CHAMPION SHOW HUNTER PONY - \$75  
RESERVE CHAMPION SHOW HUNTER PONY - \$25

### **Show Hunter Galloway over 14 hands and not exceeding 15 hands**

Class 162 Newcomer Show Hunter  
Galloway  
Class 163 Intermediate Show Hunter  
Galloway

Class 164 Open Show Hunter Horse over  
14 hands ne 14.2 hands  
Class 165 Open Show Hunter Horse over  
14.2 and ne 15 hands  
Class 166 Childs Show Hunter Galloway  
CHAMPION SHOW HUNTER GALLOWAY - \$75  
RESERVE CHAMPION SHOW HUNTER GALLOWAY  
- \$25

### **Show Hunter Horse OVER 15 HANDS**

Class 167 Newcomer Show Hunter Horse  
Class 168 Intermediate Show Hunter  
Horse  
Class 169 Open Show Hunter Horse over  
15 hands and ne 16 hands  
Class 170 Open Show Hunter Horse over  
16 hands  
Class 171 Childs Show Hunter Horse  
CHAMPION HUNTER HORSE  
RESERVE CHAMPION HUNTER HORSE  
SUPREME SHOW HUNTER  
WILD DESERT OLI & GAS FIELD SERVICES  
SUPREME SHOW HUNTER – TROPHY RUG

### **Working Hunters**

Class 172 Working Hunter Pony  
Class 173 Working Hunter Galloway  
Class 174 Working Hunter Horse  
CHAMPION WORKING HUNTER HORSE  
RESERVE CHAMPION WORKING HUNTER HORSE

# SECTION 1c - Showjumping - ALL ENTRIES VIA NOMINATE

## FROM APRIL 1st 2026

All Entries will be through NOMINATE in 2026, <https://nominate.com.au/>  
not on SHOWDAY.

**PLEASE NOTE SCHEDULE CLASSES DO NOT HAVE THE SAME NUMBER AS THE SCHEDULE ON NOMINATE,  
PLEASE REFER TO NOMINATE FOR CORRECT CLASS NUMBERS.**

Thankyou

### THURSDAY 7th May 2026

**7:30am Course walk, First horse start 7.45am**

Two Starts per Horse for Day One.

Horses can only compete in one division of concurrent classes

All Horse are required to be base registered

**Class 401** 70cm District Class (no HC)

Super Two-Phase Art 274.5.2

1st \$20 2nd \$15 3rd \$10 4th \$5

Entry \$10

**Class 402a** 80cm District Class Super Two-Phase Art 274.1.5.2 (IQ QUALIFIER)

1st \$40 2nd \$30 3rd \$20 4th \$10

Entry \$15

**Class 402b** TSHA 80cm Super Two-Phase Art 274.1.3 (IQ QUALIFIER)

1st \$40 2nd \$30 3rd \$20 4th \$10.

Entry \$15

**Class 403a** 1m Super Two-Phase Art 274.1.3 (IQ QUALIFIER)

1st \$80 2nd \$50 3rd \$30 4th \$25 5<sup>th</sup> \$15

Entry \$15

**Class 403b** TSHA 1m Super Two-Phase Art 274.1.3 (IQ QUALIFIER)

1st \$80 2nd \$50 3rd \$30 4th \$25 5<sup>th</sup> \$15  
Entry \$15

**Class 404a** 1.1m Super Two-Phase Art 274.1.3 (IQ QUALIFIER)

1st \$100 2nd \$70 3rd \$50 4th \$30 5<sup>th</sup> \$20  
Entry \$15

**Class 404b** TSHA 1.10m Super Two-Phase Art 274.1.3 (IQ QUALIFIER)

1st \$150 2nd \$100 3rd \$70 4th \$50 5<sup>th</sup> \$30  
Entry \$15

**Class 405** 1.20m Super Two-Phase Art 274.1.3 (IQ QUALIFIER)

1st \$150 2nd \$100 3rd \$70 4th \$40 5<sup>th</sup> \$30  
Entry \$15

**Class 406** TSHA 1.30m Super Two-Phase Art 274.1.3(IQ QUALIFIER)

1st \$200 2nd \$150 3rd \$100 4th \$60 5<sup>th</sup> \$40  
Entry \$20

## FRIDAY 8TH MAY 2026

**Course Walk 7.30am First Horse 7.45am**

**Class 407** 1.35m One Round Stakes Art

238.2.1

1st \$400 2nd \$300 3rd \$200 4th \$100 5th \$70

Entry \$40

**Class 408** 80cm One Round Stakes Art

238.2.1 (IQ QUALIFIER)

1st \$40 2nd \$30 3rd \$20 4th \$10

Entry \$15

**Class 409a** TSHA 1m One Round Stakes Art

238.2.1 (IQ QUALIFIER)

1st \$80 2nd \$50 3rd \$35 4th \$20 5th \$15

Entry \$15

**Class 409b** TSHA 1m One Round Stakes Art

238.2.1 (IQ QUALIFIER)

1st \$80 2nd \$50 3rd \$35 4th \$20 5th \$15

Entry \$15

**Class 410** Roma Show Grand Prix Art

273.2.2.3.2.4.2 - Sponsored by Hornick

Cypress

1st \$1000 2nd \$800 3rd \$600 4th \$500 5th \$300

6th \$200

Entry \$100

**Class 411** 1.10m One Round Art 238.2.1

1st \$150 2nd \$100 3rd \$80 4th \$60 5th \$40

Entry \$20

**Class 412** 1.20m One Round Art 238.2.1

1st \$250 2nd \$200 3rd \$100 4th \$75 5th \$50

Entry \$25

**SIX BAR**

*\*Note only one six bar/horse allowed*

**Class 413** Junior Six Bar

1st \$100 2nd \$80 3rd \$50 4th \$30

Entry \$15

**Class 414** TSHA Six Bar

1st \$190 2nd \$140 3rd \$90 4th \$70 5th \$30

Entry \$20

**Class 415** Open Six Bar

1st \$250 2nd \$180 3rd \$150 4th \$100 5th \$50

Entry \$20

## SATURDAY 9TH MAY 2026

**Course Walk 7.30am First Horse 7.45am**

Only One Championship Class per Horse

If eligible for Bonuses, please advise the Judge prior to competing.

**Class 416** 80cm Championship Art 238.2.2

(IQ QUALIFIER)

1st \$80 2nd \$60 3rd \$40 4th \$20 5th \$15

Entry \$20

**Class 417** 1m Championship Art 238.2.2

(IQ QUALIFIER)

1st \$100 2nd \$70 3rd \$50 4th \$30 5th \$20 6th

\$15

Entry \$20

**Class 418** 1.10m Championship Art 238.2.2

1st \$300 2nd \$200 3rd \$100 4th \$80 5th \$50 6th

\$30

Entry \$20

**Class 419** 1.20m Championship Art 238.2.2

1st \$400 2nd \$300 3rd \$150 4th \$80 5th \$50 6th

\$40

Entry \$40

**Class 420** Roma Show Classic

Championship 1.30m Starting Height Art

1st \$800 2nd \$600 3rd \$400 4th \$200 5th \$100

6th \$80

Entry \$80

## **SECTION 1d - The Maiden** **Electrical Stockman's** **Challenge**

**Start 8am in Campdraft Ring.**

**Entries due Wednesday before the show. Paid  
on the day at the ring**

**Steward: Sandra Cusack**

Nominations: Junior riders \$15 per horse.

Senior riders \$25 per horse.

Fill out entry form and email to

sandra.neal21@hotmail.com

ASH membership number MUST be provided to  
be eligible for the ASH prize in each section.

Children may be mounted on ponies, galloways  
or horses.

Children and adults may ride the same horse.

No limit on horses entered.

**HORSES DO NOT NEED TO BE REGISTERED  
STOCKHORSES.**

Each section will have an ASH prize for the  
entrant with the highest score riding a registered  
stockhorse. All competitors wishing to be eligible  
for this need to be current financial members of  
the ASH society.

Events will be run and judged as they are for ASH  
stockhorse futurities.

Anyone seeking further guidance on the judging  
can refer to the ASH website for further  
information. [www.ashs.com.au](http://www.ashs.com.au)

**Events 203 and 204 are for riders over 18 years.**

**\*\*\*\*We wish to thank our sponsors. Without  
their generosity, this event would not go  
ahead.\*\*\*\***

**Class 200** 7 years & under – aided  
(Working 1, Utility 2)

Walk and Trot only. Riders must be aided on a  
lead.(No ASH prize given)

Round money

1st \$5 2nd \$4 3rd \$3 4th \$2 5th \$1

Overall

1st \$25 2nd \$20 3rd \$15 4th \$10 5th \$5

**Class 201** 10 years & under (Working 1,  
Utility 2)

ASH prize sponsored by Copenhagen Stockhorses  
Round money

1st \$25 2nd \$20 3rd \$15 4th \$10 5th \$5

Overall

1st \$50 2nd \$40 3rd \$30 4th \$20 5th \$10

**Class 202** – 11 years & under 18 years  
(Utility 2, Working 4A)

ASH prize sponsored by Copenhagen Stockhorses  
Round money

1st \$25 2nd \$20 3rd \$15 4th \$10 5th \$5

Overall

1st \$60 2nd \$50 3rd \$40 4th \$30 5th \$20

**Class 203** Horse 4 years & under (Utility 2,  
Working 1)

ASH prize sponsored by Yuleba Creek Stockhorses  
Round money

1st \$30 2nd \$25 3rd \$20 4th \$15 5th \$10

Overall

1st \$75 2nd \$70 3rd \$65 4th \$60 5th \$55

**Class 204** Horse 5 years & over (Utility 2,  
Working 5)

ASH prize sponsored by Yuleba Creek Stockhorses  
Round money

1st \$30 2nd \$25 3rd \$20 4th \$15 5th \$10

Overall

1st \$75 2nd \$70 3rd \$65 4th \$60 5th \$55

**Class 205** Encouragement (Working 1,  
Utility 2)

For a rider who has not won a challenge or  
futurity at an agricultural show or at an ASHS  
futurity

ASH prize sponsored by Yuleba Creek Stockhorses  
Round money

1st \$25 2nd \$20 3rd \$15 4th \$10 5th \$5

Overall

1st \$50 2nd \$45 3rd \$40 4th \$35 5th \$30

# SECTION 2a - Stud Cattle

MR S W & MRS K M MOORHEAD

## **ENTRIES CLOSE Monday 27th April 2026**

### **Via showday online – NO LATE ENTRIES WILL BE ACCEPTED**

\$22.00 (incl GST) per entry for single animal classes

\$ 5.50 (incl GST) per entry for breeders group

Camping is \$22.00 book through showday online in extras

Entry forms must be completed by the exhibitor.

#### *RIBBONS, TROPHIES AND PRIZE MONEY:*

Roma Show Society Inc. ribbons will be awarded to the first three places in all individual classes. Broad ribbons will be awarded to all Champions and Reserve Champions.

Prize money may be awarded in all classes.

Sponsored trophies and/or prize money will be awarded to all Bos Taurus and Bos Indicus Champions as well as Interbreed Champions.

#### *RULES & REGULATIONS:*

In addition to the Roma Show Society Rules & Regulations listed at the front of the main schedule and the QCAS Stud Beef Cattle Special Regulations, the following will apply to this section.

1. All cattle (except led steers) must be stalled for NLIS scanning by 5pm Thursday, 7th May 2026 with a copy of NVD/Waybill provided to the Scanner.
2. Stud Cattle will be judged Friday, 8th May 2026 starting at 9am.
3. Led steers /heifers must be on the grounds by 7am Friday the 8th of May and will be NLIS scanned, weighed and mouthed at approximately 8am.
4. Interbreed Judging will be held at approximately 1pm, following lunch after judging of the Bos Taurus and Bos Indicus rings.
5. Led steer or heifer judging will commence at approximately 3 pm on Friday, 8th May 2026 following straight on from the Interbreed Championship.
6. Junior Judging will commence at approximately 9am on Saturday, 9th May 2026
7. Areas in the stalls will be allocated by breed by the Chief Steward. Please make note of housing signage on your arrival.
8. **All cattle must remain stalled until completion of the Young Judges and Paraders Competition on Saturday, 9th of May.**
9. All trucks and property of exhibitors must be removed from the area of the cattle stalls from 7am to 6pm Friday, 8th May and from 8am to 12pm Saturday, 9th May.
10. At no time must trucks be left on the loading ramps.
11. In all cases where registered stock is exhibited, Herd Book Certificates must be available for inspection by the Stewards.
12. The Roma Show Society Inc. reserves the right, if it so chooses, to transfer an animal from a class in which it has been entered but for which on judging day it is ineligible to compete, to a class for which it is or has become eligible to win.
13. In the event of the Judge declaring that the exhibits in any class or championship are not worthy of the prize, no prize will be awarded.
14. All partnership cattle must be entered and exhibited as such.
15. **All bulls over 12 months must be fitted with a permanent nose ring. All females over 12 months of age must be fitted with a nose grip or permanent nose ring.**
16. No drug, hormone or tranquilizer shall be administered to any animal exhibit except under the direction of the Association's Veterinary Surgeon who shall advise the Steward if in their opinion such drug, hormone or tranquilizer is likely to have any effect upon the animal which would be material to its chances of being awarded a prize and in such case the Stewards may debar the animal from competing. A steward may at any time direct the Association's Veterinary Surgeons to take a sample of blood, saliva or urine from an exhibit for testing.
17. **The age of the cattle shall be the actual age in calendar months up to the 1st of May in the year of the show.**
18. The exhibitor of any female 3 years old or over which does not have a calf at foot shall supply proof or furnish a veterinary certificate that such exhibit is either in calf or has bred in the 2 years prior to the show.
19. An animal shown on its mother is not eligible to be shown on its own in a single class.
20. A dehorned beast is not eligible for entry in any Poll Class as a Stud exhibit.
21. **All handlers must be 12 years of age or over unless accompanied by an adult over 18 years of age.**
22. Breeders Group - A group of three animals owned & bred by the exhibitor and paraded in their single class. Both sexes to be represented.

23. All prizes and prize money are to be collected from Main Office between 4pm and 6pm on Saturday 9th May. After this time, any unclaimed prizes will be dealt with in accordance with legislative requirements. At all times, it is the sole responsibility of the winner to collect his or her prize.

24. Competitors Declaration - All competitors and exhibitors have read and understand the Rules and Regulations and agree to be bound in all respects by these Rules and Regulations. Competitors and exhibitors also consent and agree that the Roma Show Society has the right to take or use photographs of him or her (and/or your property) and use the photos in any and all marketing and media worldwide, including online, now and in the future. All entrants compete at their own risk. No claim in any form shall be made by the entrant, their families, friends and/or representative against the Roma Show Society or person/s associated with the holding of the competition/exhibit.

25. **Feature Breed** only please note there are additional Group classes included in the schedule:

- Pair of Bulls - two bulls bred and owned by the exhibitor.
- Pair of Females - two females bred and owned by the exhibitor.
- Sire's Progeny Group - three animals of mixed sexes, bred and owned by the exhibitor.
- Dam's Progeny Group - two animals of either sex, bred and owned by the exhibitor.

**26. Note for Exhibitors arriving from the Cattle Tick Infested zone:**

High-risk livestock are species that are suitable hosts for cattle ticks and pose a significant risk to spreading viable cattle tick. High-risk livestock include cattle, buffalo/bison and deer.

When moving high-risk livestock from the Queensland cattle tick infested zone to the cattle tick free zone, all stock must be tick free.

Under the Biosecurity Act 2014, high risk tick carriers (ie. cattle, buffalo, bison, and deer) must meet their general biosecurity obligation and risk minimisation requirements for moving a high-risk tick carrier into or through the cattle tick free zone.

The owner or person in charge of the livestock must provide a written declaration to an accredited certifier, stating what treatments they have done to their livestock to ensure they meet the risk minimisation requirements. (see attached example). A biosecurity certificate can only be issued by an accredited certifier and must be issued before the movement takes place. The biosecurity certificate provides evidence that the risk minimisation requirements have been met for that movement.

**Movement to an agricultural show in the free zone**

A biosecurity certificate may be obtained for a high-risk tick carrier being moved from infested land or the cattle tick infested zone to an agricultural show in the cattle tick free zone if the following conditions are met:

- Prior to commencing the movement, the high-risk tick carrier must undergo a manual inspection described in the Procedure for manual inspection of a high-risk cattle tick carrier and must be tick free.
- The carrier must be returned to the point of origin (in the infested zone) within 96 hours of the manual inspection being conducted.
- The travel to and from the agricultural show must be by direct conveyance. The high-risk tick carrier must not be unloaded at a place other than the event grounds.

**A copy of the biosecurity certificate for livestock originating from the cattle tick infested area must be provided in conjunction with the NVD Waybill during inspection by local Biosecurity Officers on the day.**

For further information, exhibitors can contact their local Biosecurity Office or the Call Centre on 13 25 23 or furthermore visit the website [Cattle tick movement regulations | Business Queensland](#).

A Map of the cattle tick zones can be found using this link: <https://arcg.is/1z14500>

**\*\*\*\*\*PLEASE NOTE: Schedules are subject to change at any time and without notice\*\*\*\*\***

**Please note changes from previous years class structure with examples listed below:**

**Bos Indicus Breeds:** Brahman, Santa Gertrudis, Charbray, Simbrah, Braford, Sahiwal, Droughtmaster.

**Bos Taurus Breeds:** Simmental, Charolais, Blonde d'Aquataine, Romagnola, Mane-Anjou, Saler, Limousin, Gelbvieh, Hereford, Poll Hereford, Shorthorn, Angus, South Devon, Murray Grey

**Feature Breed 2026:** Brangus

## AGE CLASSIFICATIONS (Age to be calculated as at 1 May 2026)

Class	Age Classification	Animals Must Be Born Between
	6 months and under 9 months	1 August 2025 – 31 October 2025
	9 months and under 12 months	1 May 2025 – 31 July 2025
	12 months and under 15 months	1 February 2025 – 30 April 2025
	15 months and under 18 months	1 November 2024 – 31 January 2025
	18 months and under 21 months	1 August 2024 – 31 October 2024
	21 months and under 24 months	1 May 2024 – 31 July 2024
	24 months and under 30 months	1 November 2023 – 30 April 2024
	30 months and under 36 months	1 May 2023 – 31 October 2023
	36 months and under 48 months	1 May 2022 – 30 April 2023

### Bos Indicus

**Class 2001** Female - 6 months & under 9 months

**Class 2002** Female - 9 months & under 12 months

**Class 2003** Female - 12 months & under 15 months

CHAMPION CALF FEMALE

RESERVE CHAMPION CALF FEMALE

**Class 2004** Female - 15 months & under 18 months

**Class 2005** Female - 18 months & under 21 months

CHAMPION JUNIOR FEMALE

RESERVE CHAMPION JUNIOR FEMALE

**Class 2006** Female - 21 months & under 24 months

**Class 2007** Female - 24 months & under 30 months

**Class 2008** Female - 30 months & under 36 months

**Class 2009** Female - 36 months & under 48 months

CHAMPION SENIOR FEMALE

RESERVE CHAMPION SENIOR FEMALE

Grand Champion Female

**Class 2010** Bull - 6 months & under 9 months

**Class 2011** Bull - 9 months & under 12 months

**Class 2012** Bull - 12 months & under 15 months

CHAMPION CALF MALE

RESERVE CHAMPION CALF MALE

**Class 2013** Bull - 15 months & under 18 months

**Class 2014** Bull - 18 months & under 21 months

CHAMPION JUNIOR MALE

RESERVE CHAMPION JUNIOR MALE

**Class 2015** Bull - 21 months & under 24 months

**Class 2016** Bull - 24 months & under 30 months

**Class 2017** Bull - 30 months & under 36 months

CHAMPION SENIOR MALE

RESERVE CHAMPION SENIOR MALE

Grand Champion Male

**Class 2018** Breeders Group (see rule 22)

## Bos Taurus

**Class 2019** Female - 6 months & under 9 months

**Class 2020** Female - 9 months & under 12 months

**Class 2021** Female - 12 months & under 15 months

CHAMPION CALF FEMALE

RESERVE CHAMPION CALF FEMALE

**Class 2022** Female - 15 months & under 18 months

**Class 2023** Female - 18 months & under 21 months

CHAMPION JUNIOR FEMALE

RESERVE CHAMPION JUNIOR FEMALE

**Class 2024** Female - 21 months & under 24 months

**Class 2025** Female - 24 months & under 30 months

**Class 2026** Female - 30 months & under 36 months

**Class 2027** Female - 36 months & under 48 months

CHAMPION SENIOR FEMALE

RESERVE CHAMPION SENIOR FEMALE

Grand Champion Female

**Class 2028** Bull - 6 months & under 9 months

**Class 2029** Bull - 9 months & under 12 months

**Class 2030** Bull - 12 months & under 15 months

CHAMPION CALF MALE

RESERVE CHAMPION CALF MALE

**Class 2031** Bull - 15 months & under 18 months

**Class 2032** Bull - 18 months & under 21 months

CHAMPION JUNIOR MALE

RESERVE CHAMPION JUNIOR MALE

**Class 2033** Bull - 21 months & under 24 months

**Class 2034** Bull - 24 months & under 30 months

**Class 2035** Bull - 30 months & under 36 months

CHAMPION SENIOR MALE

RESERVE CHAMPION SENIOR MALE

Grand Champion Male

**Class 2036** Breeders Group (see rule 22)

## Feature Breed - Brangus

**Class 2037** Female - 6 months & under 9 months

**Class 2038** Female - 9 months & under 12 months

**Class 2039** Female - 12 months & under 15 months

CHAMPION CALF FEMALE Brangus

RESERVE CHAMPION CALF FEMALE Brangus

**Class 2040** Female - 15 months & under 18 months

**Class 2041** Female - 18 months & under 21 months

CHAMPION JUNIOR FEMALE Brangus

RESERVE CHAMPION JUNIOR FEMALE Brangus

**Class 2042** Female - 21 months & under 24 months

**Class 2043** Female - 24 months & under 30 months

**Class 2044** Female - 30 months & under 36 months

**Class 2045** Female - 36 months & under 48 months

CHAMPION SENIOR FEMALE Brangus

RESERVE CHAMPION SENIOR FEMALE Brangus

Grand Champion Female Brangus

**Class 2046** Bull - 6 months & under 9 months

**Class 2047** Bull - 9 months & under 12 months

**Class 2048** Bull - 12 months & under 15 months

CHAMPION CALF MALE Brangus

RESERVE CHAMPION CALF MALE Brangus

**Class 2049** Bull - 15 months & under 18 months

**Class 2050** Bull - 18 months & under 21 months

CHAMPION JUNIOR MALE Brangus

RESERVE CHAMPION JUNIOR MALE Brangus

**Class 2051** Bull - 21 months & under 24 months

**Class 2052** Bull - 24 months & under 30 months

**Class 2053** Bull - 30 months & under 36 months

CHAMPION SENIOR MALE Brangus

RESERVE CHAMPION SENIOR MALE Brangus

Grand Champion Mal Brangus

**Class 2054** Breeders Group (see rule 22)

**Class 2055** Pair of Bulls - Brangus

**Class 2056** Pair of Females - Brangus

**Class 2057** Sire's Progeny - Brangus

**Class 2058** Dam's Progeny – Brangus

**INTERBREED CALF CHAMPION MALE**

**INTERBREED JUNIOR CHAMPION MALE**

**INTERBREED SENIOR CHAMPION MALE**

**INTERBREED CALF CHAMPION FEMALE**

**INTERBREED JUNIOR CHAMPION FEMALE**

**INTERBREED SENIOR CHAMPION FEMALE**

**INTERBREED BREEDERS GROUP**

**INTERBREED CHAMPION MALE**

**INTERBREED CHAMPION FEMALE**

## **SECTION 2b - Led Steer or Heifer**

STEWARDS:

CHIEF STEWARD: Matt Ahern – (m) 0427 874 218

**ENTRIES:**

ENTRIES CLOSE Monday 27th April, 2026 – NO LATE ENTRIES WILL BE ACCEPTED

ENTRY FEE: \$22.00 (GST Incl)

Entry forms must be completed by exhibitor.

**RIBBONS, TROPHIES AND PRIZE MONEY:**

Roma Show Society Inc. ribbons will be awarded to the first three places in all individual classes. Broad ribbons will be awarded to all Champions and Reserve Champions.

Prize money will be awarded in all classes.

Sponsored trophies and/or prize money will be awarded to all Champions

**RULES & REGULATIONS:**

In addition to the Roma Show Society Rules & Regulations listed at the front of the main schedule, the following will apply to this section.

1. Led Steer or heifer judging will take place on Friday afternoon, 8th of May following the Interbreed judging (approximately 3pm).

2. All animals to be mouthed and NLIS scanned at approximately 8am Friday, 8th May 2026. Exhibits will not be eligible for competition if they show permanent incisors.

3. Exhibits may be purebred or crossbred.

4. Entries must be led utilising nose rings or nose grips.

5. Stewards' decision on any matter in this section will be final.

6. The committee reserves the right to limit entries per person should the number of entries exceed space available.

7. The committee reserves the right to alter/add classes depending on the number of entries received.

8. Heifers shown in stud classes are not eligible to be shown as led heifers.

## Led Steer or Heifer

**Class 2600** Light Weight - 400kgs and under

**Class 2601** Medium - 401kgs to 490kgs

**Class 2602** Heavy Weight - 491kgs to 650kgs

CHAMPION LED STEER or HEIFER

RESERVE CHAMPION LED STEER or HEIFER

### SECTION 2c - Junior Judging & Junior Paraders

#### STEWARDS:

CHIEF STEWARD: Matt Ahern – (m) 0427 874 218

Aleacea Nixon - (m) 0409 741 818

#### ENTRIES:

ENTRIES to be received up to 9th May, 2026 – **CHILDREN UNDER 18 MUST BE ACCOMPANIED BY AN ADULT AND ENTER BY 8AM ON SATURDAY 9TH OF MAY 2026.**

**NEW THIS YEAR: Tips and tricks will be given prior to judging with Aleacea.**

#### ENTRY FEE: NIL

Entry forms must be completed by an adult if the competitor is under 18 years of age.

#### RIBBONS, TROPHIES AND PRIZE MONEY:

Roma Show Society Inc. ribbons will be awarded to the first three places in all individual classes. Broad ribbons will be awarded to all Champions and Reserve Champions.

Prize money will be awarded in all classes.

#### RULES & REGULATIONS:

In addition to the Roma Show Society Rules & Regulations listed at the front of the main schedule, the following will apply to this section.

Please ensure you have perused and understand the Qld Ag Shows Rules for Stud Beef Cattle judging prior to entering.

<https://qldagshows.com.au/stud-beef-cattle/>

1. Junior Paraders and judging will take place on Saturday, 9th May 2026 commencing at approximately 9am.

The Paraders competition will be judged first.

2. The competitor's age at 1st May 2026 shall be the age group they shall compete in.

3. Only those over 15 years shall be eligible for Sub-Chamber and State competitions.

4. The competitor aged 15 years and under 25 years with the highest points, shall represent Roma Show in the South West sub chamber competition.

5. Stewards' decision on any matter in this section will be final.

6. Rules and Regulations may be found in the QCAS Competition Rules for Young Judges and Paraders. Please ensure that entry forms are completed for all competitors and waivers are duly signed by eligible persons.

### PARADERS

**Class 2700** Junior - 14 years and under

**Class 2701** Intermediate - 15 years and under 18

**Class 2702** Senior - 18 years and under 25.

CHAMPION JUNIOR PARADER

RESERVE CHAMPION JUNIOR PARADER

### JUNIOR JUDGES

**Class 2703** Junior - 14 years and under

**Class 2704** Intermediate - 15 years and under 18

**Class 2705** Senior - 18 years and under 25.

CHAMPION JUNIOR JUDGE

RESERVE CHAMPION JUNIOR JUDGE

## **SECTION 3a - Stud Sheep**

**Entries Close: Thursday 7th May 2026 - NO  
LATE ENTRIES WILL BE ACCEPTED**

Nomination Fee: \$4.00 per head -  
Entry forms must be completed by exhibitor

### **RULES AND REGULATIONS**

In addition to Roma Show Society Rules & Regulations listed at the front of the main schedule, the following will apply to this section.

1. Sheep must be penned for Sheep Classification to commence at 9am, Friday 8th May 2026.
2. All sheep must be the bona-fide property of the exhibitor, whether individuals or firms.
3. It is the responsibility of all exhibitors to arrange for holders of their sheep.
4. The Chief Steward reserves the right to transfer sheep wrongly classified to their correct classes for judging.
5. No exhibitors will combine their sheep to compete in any classes.
6. All sheep exhibited must be from a registered Merino Stud and shorn in accordance with the following regulations:
  - a) Queensland sheep to be shorn to a 15th August shearing date which allows 12mm at that date plus 1mm for every day after. Inspection must be carried out within 30 days, last inspection is 15th September.
  - b) Interstate sheep that wish to shear for a 15th August shearing date must be inspected by two NSW Councillors and use QLD tags.
7. Judges are to be instructed that sheep are to be judged "as are" on the day.
8. All sheep must be in their pens and remain there unless removal is authorized by stewards, once judging is commenced.
9. No ribbon other than those awarded at the current show and no sign other than the name and address of the stud, may be displayed.
10. Inspection tags will be checked. It is the responsibility of the Exhibitor to have their Inspection Certificates with them. A statutory Declaration must accompany Inspection Sheets where tags have been replaced. Sheep that do not have their appropriate tag are not eligible for showing.
11. For a ram to be classed as a Poll Merino it must:
  - a) Be sired by a Merino or Poll Merino ram out of a Merino or Poll Merino ewe.
  - b) Have a concavity in the bone of the skull on the horn site. Not have a scur or bone knob either of which measures more than 1-1/4" (25mm) in diameter across the widest part of its base. ( A scur is a horny growth not attached to the bone site)
12. For a ewe to be classed as a Poll Merino it must:
  - a) Be sired by a Merino or Poll Merino ram out of a Merino or Poll Merino ewe.
  - b) Have a concavity in the bone of the skull on the horn site. Not have a scur or bone knob either of which

measures more than 1-1/4" (25mm) in diameter across the widest part of its base. ( A scur is a horny growth not attached to the bone site)

13. All sheep exhibited must be from a Brucellosis Accredited free flock or else Blood tested in accordance with QMSSA and DPI requirements. Sheep from an accredited free flock must produce a Certificate to verify their status. Sheep which have been Blood tested must be identified by tags and certificate must accompany these sheep to verify their status.

14. Feed and water tins are to be supplied by the Exhibitor.

**ANY SUBJECT NOT COVERED BY THESE CONDITIONS WILL  
BE DECIDED BY THE COMMITTEE**

## **STRONG MERINO RAM**

**Class 3000** Ram 2 tooth

**Class 3001** Ram 4 tooth

**Class 3002** Ram 6 tooth

Champion Strong Merino Ram

From classes 3000 to 3002

Reserve Champion Strong Wool Ram

from classes 3000 to 3002

## **MEDIUM MERINO RAM**

**Class 3003** Ram 2 tooth

**Class 3004** Ram 4 tooth

**Class 3005** Ram 6 tooth

Reserve Grand Champion Merino Ram

From Classes 3000 to 3005

Grand Champion Merino Ram

From Classes 3000 to 3005

Champion Medium Merino Ram

from classes 3003 to 3005

Reserve Champion Medium Ram

From classes 3003 to 3005

## **STRONG MERINO EWE**

**Class 3006** Ewe 2 tooth

**Class 3007** Ewe 4 tooth

**Class 3008** Ewe 6 tooth

Champion Strong Merino Ewe

From classes 3006 to 3008

Reserve Champion Strong Wool Ewe

From classes 3006 to 3008

## MEDIUM MERINO EWE

**Class 3009** Ewe 2 tooth

**Class 3010** Ewe 4 tooth

**Class 3011** Ewe 6 tooth

Champion Medium Merino Ewe

From Classes 3009 to 3011

Reserve Champion Medium wool Ewe

From classes 3009 to 3011

## MERINO EWE

**Class 3012** Merino Ewe 6 tooth

Grand Champion Merino Ewe

From Classes 3006 to 3012

Reserve Grand Champion Ewe

From Classes 3006 to 3012

## STRONG POLL MERINO RAM

**Class 3013** Poll Ram 2 tooth

**Class 3014** Poll Ram 4 tooth

**Class 3015** Poll Ram 6 tooth

Reserve Champion Poll Strong Merino Ram

From classes 3013 to 3015

Champion Strong Poll Ram

From classes 3013 to 3015

## MEDIUM POLL MERINO RAM

**Class 3016** Poll Ram 2 tooth

**Class 3017** Poll Ram 4 tooth

**Class 3018** Poll Ram 6 tooth

Grand Champion Poll Merino Ram

From classes 3013 to 3018

Reserve Grand Champion Poll Merino Ram

From classes 3013 to 3018

Reserve Champion Poll Medium Merino Ram

From Classes 3016 to 3018

Champion Medium Poll Ram

From classes 3016 to 3018

## STRONG POLL MERINO EWE

**Class 3019** Poll Ewe 2 tooth

**Class 3020** Poll Ewe 4 tooth

**Class 3021** Poll Ewe 6 tooth

Reserve Champion Poll Strong Merino Ewe

From classes 3019 to 3021

Champion Strong Poll Ewe

From Classes 3019 to 3021

## MEDIUM POLL MERINO EWE

**Class 3022** Strong Merino Ewe 2 tooth

**Class 3023** Strong Merino Ewe 4 tooth

**Class 3024** Strong Merino Ewe 6 tooth

Grand Champion Poll Merino Ewe

From Classes 3019 to 3024

Reserve Grand Champion Poll Merino Ewe

From classes 3019 to 3024

SUPREME RAM OF THE SHOW

From Classes 3000 to 3005 and 3013 to 3018

Reserve Champion Poll Medium Merino Ewe

From Classes 3022 to 3024

SUPREME EWE OF THE SHOW

from classes 3006 to 3012 and 3019 to 3024

Champion Medium Poll Ewe

From classes 3022 to 3024

## **SECTION 3b - Wool**

CHIEF STEWARD: Peter Hacker

**ENTRIES CLOSE FRIDAY 8TH MAY 2026 AT 12.00 noon – NO LATE ENTRIES WILL BE ACCEPTED**

Fleece Entry Fee: \$5.00 per exhibit

No Entry Fee if the fleece is donated to the Roma Show Society Inc.

**RIBBONS, TROPHIES AND PRIZE MONEY:**

(Unless otherwise specified)

Ribbons = 1st – 3rd each class, Champion, Grand & Reserve Champion

### **RULES & REGULATIONS:**

In addition to the Roma Show Society Rules & Regulations listed at the front of the main schedule, the following will apply to this section.

1. The exhibitor must attach a tag showing: Name, Address, Division and Class number to each fleece.
2. If exhibits are forwarded by rail, road, they must be securely packed and consigned to The Secretary of the Roma Show Society Inc.
3. All fleeces are to be shorn from sheep that are the bona fide property of the exhibitor, are to be lightly skirted, no bellies, locks or stained wool to be included and not more than 12 months' growth.
4. Fleeces, which in the opinion of the judge are overgrown, will be judged accordingly.
5. The judge will transfer any fleece to the class to which, in his opinion, it rightfully belongs.
6. Fleeces will be judged on the points system.
7. It will be the judge's decision to judge the fleece on Fine, Medium or Strong.
8. All prizes and prize money are to be collected from the Main Office between 4pm and 6pm on Saturday 9th May. After this time, any unclaimed prizes will be dealt with in accordance with legislative requirements. At all times, it is the sole responsibility of the winner to collect his or her prize.
9. Competitors Declaration - All competitors and exhibitors have read and understand the Rules and Regulations and agree to be bound in all respects by these Rules and Regulations. Competitors and exhibitors also consent and agree that the Roma Show Society has the right to take or use photographs of him or her (and/or your property) and use the photos in any and all marketing and media worldwide, including online, now and in the future. All entrants compete at their own risk. No claim in any form shall be made by the entrant, their families, friends and/or representative against the Roma Show Society or person/s associated with the holding of the competition/exhibit.

**\*\*\*\*\* PLEASE NOTE: Schedules are subject to change at any time and without notice. \*\*\*\*\***

### **Stud Sheep Fleeces**

- Class 3500** Merino Ram fleece - Fine
- Class 3501** Merino Ram fleece - Medium
- Class 3502** Merino Ram fleece - Strong
- Class 3503** Merino Ewe fleece - Fine
- Class 3504** Merino Ewe fleece - Medium
- Class 3505** Merino Ewe fleece - Strong

### **Flock Sheep Fleeces**

- Class 3506** Open Fine Ewe or Wether Fleece
- Class 3507** Open Medium Ewe or Wether Fleece
- Class 3508** Open Strong Ewe or Wether Fleece
- CHAMPION STUD RAM FLEECE
- CHAMPION STUD EWE FLEECE
- GRAND CHAMPION STUD RAM FLEECE
- GRAND CHAMPION STUD EWE FLEECE
- GRAND CHAMPION "Ewe or Wether" FLEECE
- RESERVE CHAMPION "Ewe or Wether" FLEECE
- GRAND CHAMPION FLEECE of the Show
- RESERVE GRAND CHAMPION FLEECE of the Show

## **SECTION 5 - Poultry**

**CHIEF STEWARD:** Mick Maloney, email: romashowpoultry@outlook.com or send to PO Box 822  
Ph. 0419 702153 [Please text when Entry Form has been sent]

### **ENTRIES:**

**ENTRIES CLOSE: Friday, 1st May 2026 or when pens are full. No entries taken once pens are full.**

Entry Fee: \$1.50 (Inc. G.S.T) per entry

### **RIBBONS, TROPHIES AND OR PRIZE MONEY:**

(Unless otherwise specified)	RESERVE CHAMPION HARD	CHAMPION BACK YARD FOWL
GRAND CHAMPION FOWL	FEATHER	RESERVE CHAMPION BACK YARD
RESERVE GRAND CHAMPION FOWL	CHAMPION SOFT FEATHER BANTAM	FOWL
CHAMPION WATERFOWL	RESERVE SOFT FEATHER BANTAM	CHAMPION CAGE BIRD
RESERVE CHAMPION WATERFOWL	CHAMPION HARD FEATHER	RESERVE CHAMPION CAGE BIRD
CHAMPION LARGE SOFT FEATHER	BANTAM	CHAMPION PIGEON
RESERVE CHAMPION LARGE SOFT	RESERVE CHAMPION HARD FEATHER	RESERVE CHAMPION PIGEON
FEATHER	BANTAM	CHAMPION SHOW PEN HOMER
CHAMPION LARGE HARD FEATHER	CHAMPION BREEDING PAIR	CHAMPION FANCY PIGEON
	CHAMPION PAIR OF PULLETS	CHAMPION JUNIOR PIGEON

### **RULES & REGULATIONS:**

1. There will be officials at the poultry shed from 4pm Thursday till 6pm. The Poultry shed will be open from 7am Friday morning till 5pm Friday night and from 6am Saturday morning with the latest entries to be penned by 8.30 am Saturday 9th May 2026. Judging will commence at 9.00am of Saturday 9th May 2026.
2. Prize cards will only be given out if requested on entry form.
3. We ask all exhibitors to please clean out their pens with the tools provided.
4. The judges shall have the power to withhold a first award if the exhibit is not considered of sufficient merit.
5. No bird entered is to be taken from the pavilion without the consent and supervision of a Steward before **4:00 pm** on Saturday 9th May 2026.
6. Exhibitors or visitors are not permitted to handle birds without the section stewards' consent.
7. Any exhibit found to be infected with Vermin or Disease will be disqualified and must be removed from the Pavilion immediately. It is highly recommended that all Pigeons be vaccinated for PMV and Rota Virus.
8. The Roma Show Society Inc. will not under any circumstances hold itself responsible for any loss, misdelivery or any damage of exhibits in this section
9. All birds entered in "Any Other Variety" and "Any Other Colour" classes must be described fully, if sufficient similar entries are received, new classes will be made.
10. All birds are to be fed and watered by the exhibitor. If exhibitor is not available to do so a nominated person is to feed and water all exhibits. Waters will be provided.
11. Exhibitors please note that this is a one day only show but we ask the local exhibitors to pen some birds on Friday for display purposes. Penning from 4pm Thursday, 7th May 2026.
12. Exhibits may only be entered in one class.
13. All prizes and prize money are to be collected from the Main Office between 4pm and 6pm on Saturday 9th May. After this time, any unclaimed prizes will be dealt with in accordance with legislative requirements. At all times, it is the sole responsibility of the winner to collect his or her prize.
14. Competitors Declaration - All competitors and exhibitors have read and understand the Rules and Regulations and agree to be bound in all respects by these Rules and Regulations. Competitors and exhibitors also consent and agree that the Roma Show Society has the right to take or use photographs of him or her (and/or your property) and use the photos in all marketing and media worldwide, including online, now and in the future. All entrants compete at their own risk. No claim in any form shall be made by the entrant, their families, friends and/or representative against the Roma Show Society or person/s associated with the holding of the competition/exhibit.

**\*\*\*\*\*PLEASE NOTE: Schedules are subject to change at any time and without notice\*\*\*\*\***

Poultry Shed is near Machinery Alley, next to the Bar.

Please park across the race track on the eastern side of shed once birds are unloaded.

Please DO NOT park near gum trees.

# WATER FOWL

## WATER FOWL - HEAVY

Class 5001 Muscovy White Drake  
Class 5002 Muscovy White Duck  
Class 5003 Muscovy AORC Drake  
Class 5004 Muscovy AORC Duck  
Class 5005 Rouen ARC Drake  
Class 5006 Rouen ARC Duck  
Class 5007 Pekin Drake  
Class 5008 Pekin Duck  
Class 5009 AOV Heavy Drake  
Class 5010 AOV Heavy Duck

## WATER FOWL - LIGHT

Class 5011 Campbell ARC Drake  
Class 5012 Campbell ARC Duck  
Class 5013 Indian Runner White Drake  
Class 5014 Indian Runner White Duck  
Class 5015 Indian Runner AORC Drake  
Class 5016 Indian Runner AORC Duck  
Class 5017 Welsh Harlequin Drake  
Class 5018 Welsh Harlequin Duck  
Class 5019 Buff Orpington Drake  
Class 5020 Buff Orpington Duck  
Class 5021 AOV Light Drake  
Class 5022 AOV Light Duck

## WATER FOWL BANTAM

Class 5023 Mallard Natural Drake  
Class 5024 Mallard Natural Duck  
Class 5025 Mallard White Drake  
Class 5026 Mallard White Duck  
Class 5027 Mallard AORC Drake  
Class 5028 Mallard AORC Duck  
Class 5029 Welsh Harlequin Drake  
Class 5030 Welsh Harlequin Duck  
Class 5031 Call Duck Drake  
Class 5032 Call Duck Duck  
Class 5033 A.O.V. Bantam Drake  
Class 5034 A.O.V. Bantam Duck  
Class 5035 Goose A.V. Drake  
Class 5036 Goose A.V. Duck

CHAMPION HEAVY WATERFOWL

CHAMPION LIGHT WATERFOWL

CHAMPION BANTAM WATERFOWL

CHAMPION WATERFOWL

RESERVE CHAMPION WATERFOWL

## TURKEY

Class 5037 Guinea Fowl ARC Gobler  
Class 5038 Guinea Fowl ARC Hen  
Class 5039 Turkey ARC Gobler  
Class 5040 Turkey ARC Hen  
CHAMPION GUINEA FOWL  
CHAMPION TURKEY

## POULTRY

### LARGE SOFT FEATHER - HEAVY

Class 5041 Australorp Black Cock  
Class 5042 Australorp Black Hen  
Class 5043 Australorp Black Cockrel  
Class 5044 Australorp Black Pullet  
Class 5045 Australorp Blue Cock  
Class 5046 Australorp Blue Hen  
Class 5047 Australorp Blue Cockrel  
Class 5048 Australorp Blue Pullet  
Class 5049 Australorp White Cock  
Class 5050 Australorp White Hen  
Class 5051 Australorp White Cockrel  
Class 5052 Australorp White Pullet  
Class 5053 Langshan Black Cock  
Class 5054 Langshan Black Hen  
Class 5055 Langshan Black Cockrel  
Class 5056 Langshan Black Pullet  
Class 5057 Langshan Blue Cock  
Class 5058 Langshan Blue Hen  
Class 5059 Langshan Blue Cockrel  
Class 5060 Langshan Blue Pullet  
Class 5061 Langshan White Cock  
Class 5062 Langshan White Hen  
Class 5063 Langshan White Cockrel  
Class 5064 Langshan White Pullet  
Class 5065 Plymouth Rock AORC Cock  
Class 5066 Plymouth Rock AORC Hen  
Class 5067 Plymouth Rock AORC Cockrel  
Class 5068 Plymouth Rock AORC Pullet  
Class 5069 Rhode Island ARC Cock  
Class 5070 Rhode Island ARC Hen  
Class 5071 Rhode Island ARC Cockrel  
Class 5072 Rhode Island ARC Pullet  
Class 5073 Wyandotte white Cock  
Class 5074 Wyandotte white Hen  
Class 5075 Wyandotte white Cockrel  
Class 5076 Wyandotte white Pullet  
Class 5077 Wyandotte AORC Cock

Class 5078 Wyandotte AORC Hen  
Class 5079 Wyandotte AORC Cockrel  
Class 5080 Wyandotte AORC Pullet  
Class 5081 Sussex AORC Cock  
Class 5082 Sussex AORC Hen  
Class 5083 Sussex AORC Cockrel  
Class 5084 Sussex AORC Pullet  
Class 5085 Brahma ARC Cock  
Class 5086 Brahma ARC Hen  
Class 5087 Brahma ARC Cockrel  
Class 5088 Brahma ARC Pullet  
Class 5089 A.O.V. Heavy Soft Feather Cock  
Class 5090 A.O.V. Heavy Soft Feather Hen  
Class 5091 A.O.V. Heavy Soft Feather Cockrel  
Class 5092 A.O.V. Heavy Soft Feather Pullet  
CHAMPION LARGE SOFT FEATHER - HEAVY

#### **LARGE SOFT FEATHER - LIGHT**

Class 5093 Ancona Cock  
Class 5094 Ancona Hen  
Class 5095 Ancona Cockrel  
Class 5096 Ancona Pullet  
Class 5097 Minorca Black Cock  
Class 5098 Minorca Black Hen  
Class 5099 Minorca Black Cockrel  
Class 5100 Minorca Black Pullet  
Class 5101 Minorca AORC Cock  
Class 5102 Minorca AORC Hen  
Class 5103 Minorca AORC Cockrel  
Class 5104 Minorca AORC Pullet  
Class 5105 Leghorn White Cock  
Class 5106 Leghorn White Hen  
Class 5107 Leghorn White Cockrel  
Class 5108 Leghorn White Pullet  
Class 5109 Leghorn Black Cock  
Class 5110 Leghorn Black Hen  
Class 5111 Leghorn Black Cockrel  
Class 5112 Leghorn Black Pullet  
Class 5113 Leghorn AORC Cock  
Class 5114 Leghorn AORC Hen  
Class 5115 Leghorn AORC Cockrel  
Class 5116 Leghorn AORC Pullet  
Class 5117 Silkie White Cock  
Class 5118 Silkie White Hen  
Class 5119 Silkie White Cockrel  
Class 5120 Silkie White Pullet  
Class 5121 Silkie AORC Cock  
Class 5122 Silkie AORC Hen  
Class 5123 Silkie AORC Cockrel  
Class 5124 Silkie AORC Pullet

Class 5125 Polish ARC Cock  
Class 5126 Polish ARC Hen  
Class 5127 Polish ARC Cockrel  
Class 5128 Polish ARC Pullet  
Class 5129 Araucana ARC Cock  
Class 5130 Araucana ARC Hen  
Class 5131 Araucana ARC Cockrel  
Class 5132 Araucana ARC Pullet  
Class 5133 A.O.V. Light Soft Feather Cock  
Class 5134 A.O.V. Light Soft Feather Hen  
Class 5135 A.O.V. Light Soft Feather Cockrel  
Class 5136 A.O.V. Light Soft Feather Pullet  
CHAMPION LARGE SOFT FEATHER - LIGHT  
CHAMPION LARGE SOFT FEATHER  
RESERVE CHAMPION LARGE SOFT FEATHER

#### **SOFT FEATHER BANTAMS - HEAVY**

Class 5137 Australorp Black Cock  
Class 5138 Australorp Black Hen  
Class 5139 Australorp Black Cockrel  
Class 5140 Australorp Black Pullet  
Class 5141 Australorp Blue Cock  
Class 5142 Australorp Blue Hen  
Class 5143 Australorp Blue Cockrel  
Class 5144 Australorp Blue Pullet  
Class 5145 Australorp White Cock  
Class 5146 Australorp White Hen  
Class 5147 Australorp White Cockrel  
Class 5148 Australorp White Pullet  
Class 5149 Langshan Black Cock  
Class 5150 Langshan Black Hen  
Class 5151 Langshan Black Cockrel  
Class 5152 Langshan Black Pullet  
Class 5153 Langshan Blue Cock  
Class 5154 Langshan Blue Hen  
Class 5155 Langshan Blue Cockrel  
Class 5156 Langshan Blue Pullet  
Class 5157 Langshan White Cock  
Class 5158 Langshan White Hen  
Class 5159 Langshan White Cockrel  
Class 5160 Langshan White Pullet  
Class 5161 Rhode Island ARC Cock  
Class 5162 Rhode Island ARC Hen  
Class 5163 Rhode Island ARC Cockrel  
Class 5164 Rhode Island ARC Pullet  
Class 5165 Sussex ARC Cock  
Class 5166 Sussex ARC Hen  
Class 5167 Sussex ARC Cockrel  
Class 5168 Sussex ARC Pullet  
Class 5169 Wyandotte White Cock

Class 5170 Wyandotte White Hen  
Class 5171 Wyandotte White Cockrel  
Class 5172 Wyandotte White Pullet  
Class 5173 Wyandotte AORC Cock  
Class 5174 Wyandotte AORC Hen  
Class 5175 Wyandotte AORC Cockrel  
Class 5176 Wyandotte AORC Pullet  
Class 5177 Orpington ARC Cock  
Class 5178 Orpington ARC Hen  
Class 5179 Orpington ARC Cockrel  
Class 5180 Orpington ARC Pullet  
Class 5181 AOV Soft Feather Heavy Cock  
Class 5182 AOV Soft Feather Heavy Hen  
Class 5183 AOV Soft Feather Heavy Cockrel  
Class 5184 AOV Soft Feather Heavy Pullet  
CHAMPION BANTAM SOFT FEATHER – HEAVY

#### **SOFT FEATHER BANTAMS - LIGHT**

Class 5185 Ancona ARC Cock  
Class 5186 Ancona ARC Hen  
Class 5187 Ancona ARC Cockrel  
Class 5188 Ancona ARC Pullet  
Class 5189 Leghorn White Cock  
Class 5190 Leghorn White Hen  
Class 5191 Leghorn White Cockrel  
Class 5192 Leghorn White Pullet  
Class 5193 Leghorn Black Cock  
Class 5194 Leghorn Black Hen  
Class 5195 Leghorn Black Cockrel  
Class 5196 Leghorn Black Pullet  
Class 5197 Leghorn AORC Cock  
Class 5198 Leghorn AORC Hen  
Class 5199 Leghorn AORC Cockrel  
Class 5200 Leghorn AORC Pullet  
Class 5201 Minorca Black Cock  
Class 5202 Minorca Black Hen  
Class 5203 Minorca Black Cockrel  
Class 5204 Minorca Black Pullet  
Class 5205 Minorca AORC Cock  
Class 5206 Minorca AORC Hen  
Class 5207 Minorca AORC Cockrel  
Class 5208 Minorca AORC Pullet  
Class 5209 Pekin White Cock  
Class 5210 Pekin White Hen  
Class 5211 Pekin White Cockrel  
Class 5212 Pekin White Pullet  
Class 5213 Pekin Black Cock  
Class 5214 Pekin Black Hen  
Class 5215 Pekin Black Cockrel  
Class 5216 Pekin Black Pullet

Class 5217 Pekin AORC Cock  
Class 5218 Pekin AORC Hen  
Class 5219 Pekin AORC Cockrel  
Class 5220 Pekin AORC Pullet  
Class 5221 Rosecomb ARC Cock  
Class 5222 Rosecomb ARC Hen  
Class 5223 Rosecomb ARC Cockrel  
Class 5224 Rosecomb ARC Pullet  
Class 5225 Frizzle ARC Cock  
Class 5226 Frizzle ARC Hen  
Class 5227 Frizzle ARC Cockrel  
Class 5228 Frizzle ARC Pullet  
Class 5229 Araucana ARC Cock  
Class 5230 Araucana ARC Hen  
Class 5231 Araucana ARC Cockrel  
Class 5232 Araucana ARC Pullet  
Class 5233 Belgian AV Cock  
Class 5234 Belgian AV Hen  
Class 5235 Belgian AV Cockrel  
Class 5236 Belgian AV Pullet  
Class 5237 A O V Soft Feather Light Cock  
Class 5238 A O V Soft Feather Light Hen  
Class 5239 A O V Soft Feather Light Cockrel  
Class 5240 A O V Soft Feather Light Pullet  
CHAMPION BANTAM SOFT FEATHER - LIGHT  
CHAMPION BANTAM SOFT FEATHER  
RESERVE CHAMPION BANTAM SOFT FEATHER

#### **LARGE GAME BIRDS - OLD ENGLISH**

Class 5241 Black Red D.L. Cock  
Class 5242 Black Red D.L. Hen  
Class 5243 Black Red D.L. Cockrel  
Class 5244 Black Red D.L. Pullet  
Class 5245 Black Red L.L. Cock  
Class 5246 Black Red L.L. Hen  
Class 5247 Black Red L.L. Cockrel  
Class 5248 Black Red L.L. Pullet  
Class 5249 Wheaten ARC Hen  
Class 5250 Wheaten ARC Pullet  
Class 5251 Birchen or Gray Cock  
Class 5252 Birchen or Gray Hen  
Class 5253 Birchen or Gray Cockrel  
Class 5254 Birchen or Gray Pullet  
Class 5255 Brown Red Cock  
Class 5256 Brown Red Hen  
Class 5257 Brown Red Cockrel  
Class 5258 Brown Red Pullet  
Class 5259 Blue Red Cock  
Class 5260 Blue Red Hen  
Class 5261 Blue Red Cockrel

Class 5262 Blue Red Pullet  
Class 5263 Duckwing Cock  
Class 5264 Duckwing Hen  
Class 5265 Duckwing Cockrel  
Class 5266 Duckwing Pullet  
Class 5267 Pile Cock  
Class 5268 Pile Hen  
Class 5269 Pile Cockrel  
Class 5270 Pile Pullet  
Class 5271 AORC Old English Game Cock  
Class 5272 AORC Old English Game Hen  
Class 5273 AORC Old English Game Cockrel  
Class 5274 AORC Old English Game Pullet  
CHAMPION OLD ENGLISH GAME LARGE

#### **LARGE HARD FEATHER A.O.V.**

Class 5275 Australian Game Black Red Cock  
Class 5276 Australian Game Black Red Hen  
Class 5277 Australian Game Black Red Cockrel  
Class 5278 Australian Game Black Red Pullet  
Class 5279 Australian Game Blue Red Cock  
Class 5280 Australian Game Blue Red Hen  
Class 5281 Australian Game Blue Red Cockrel  
Class 5282 Australian Game Blue Red Pullet  
Class 5283 Australian Game AORC Cock  
Class 5284 Australian Game AORC Hen  
Class 5285 Australian Game AORC Cockrel  
Class 5286 Australian Game AORC Pullet  
Class 5287 Modern Game Black Red Cock  
Class 5288 Modern Game Black Red Hen  
Class 5289 Modern Game Black Red Cockrel  
Class 5290 Modern Game Black Red Pullet  
Class 5291 Modern Game AORC Cock  
Class 5292 Modern Game AORC Hen  
Class 5293 Modern Game AORC Cockrel  
Class 5294 Modern Game AORC Pullet  
Class 5295 Indian Game ARC Cock  
Class 5296 Indian Game ARC Hen  
Class 5297 Indian Game ARC Cockrel  
Class 5298 Indian Game ARC Pullet  
Class 5299 Jubilee Game Cock  
Class 5300 Jubilee Game Hen  
Class 5301 Jubilee Game Cockrel  
Class 5302 Jubilee Game Pullet  
Class 5303 Malay Game A.C Cock  
Class 5304 Malay Game A.C Hen  
Class 5305 Malay Game A.C Cockrel  
Class 5306 Malay Game A.C Pullet  
Class 5307 Pitt Clean Face Heavy Cock  
Class 5308 Pitt Clean Face Heavy Hen

Class 5309 Pitt Clean Face Heavy Cockrel  
Class 5310 Pitt Clean Face Heavy Pullet  
Class 5311 Pitt Clean Face Light Cock  
Class 5312 Pitt Clean Face Light Hen  
Class 5313 Pitt Clean Face Light Cockrel  
Class 5314 Pitt Clean Face Light Pullet  
Class 5315 Pitt Muff Heavy Cock  
Class 5316 Pitt Muff Heavy Hen  
Class 5317 Pitt Muff Heavy Cockrel  
Class 5318 Pitt Muff Heavy Pullet  
Class 5319 Pitt Muff Light Cock  
Class 5320 Pitt Muff Light Hen  
Class 5321 Pitt Muff Light Cockrel  
Class 5322 Pitt Muff Light Pullet  
Class 5323 A.O.V. Game Cock  
Class 5324 A.O.V. Game Hen  
Class 5325 A.O.V. Game Cockrel  
Class 5326 A.O.V. Game Pullet  
CHAMPION LARGE HARD FEATHER AOV  
CHAMPION LARGE HARD FEATHER FOWL  
RESERVE CHAMPION LARGE HARD FEATHER  
FOWL

#### **GAME BANTAMS: OLD ENGLISH GAME**

Class 5327 Black Red L.L. Cock  
Class 5328 Black Red L.L. Hen  
Class 5329 Black Red L.L. Cockrel  
Class 5330 Black Red L.L. Pullet  
Class 5331 Black Red D.L. Cock  
Class 5332 Black Red D.L. Hen  
Class 5333 Black Red D.L. Cockrel  
Class 5334 Black Red D.L. Pullet  
Class 5335 Black Tail Clay or Wheaten Hen  
Class 5336 Black Tail Clay or Wheaten Pullet  
Class 5337 Blue Tail Clay or Wheaten Hen  
Class 5338 Blue Tail Clay or Wheaten Pullet  
Class 5339 Blue Red Cock  
Class 5340 Blue Red Hen  
Class 5341 Blue Red Cockrel  
Class 5342 Blue Red Pullet  
Class 5343 Spangle Cock  
Class 5344 Spangle Hen  
Class 5345 Spangle Cockrel  
Class 5346 Spangle Pullet  
Class 5347 Duckwing ARC Cock  
Class 5348 Duckwing ARC Hen  
Class 5349 Duckwing ARC Cockrel  
Class 5350 Duckwing ARC Pullet  
Class 5351 Brown Red Cock  
Class 5352 Brown Red Hen

Class 5353 Brown Red Cockrel  
 Class 5354 Brown Red Pullet  
 Class 5355 Self-Black or Blue Cock  
 Class 5356 Self-Black or Blue Hen  
 Class 5357 Self-Black or Blue Cockrel  
 Class 5358 Self-Black or Blue Pullet  
 Class 5359 Ginger Cock  
 Class 5360 Ginger Hen  
 Class 5361 Ginger Cockrel  
 Class 5362 Ginger Pullet  
 Class 5363 Birchen or Grey Cock  
 Class 5364 Birchen or Grey Hen  
 Class 5365 Birchen or Grey Cockrel  
 Class 5366 Birchen or Grey Pullet  
 Class 5367 Pile Cock  
 Class 5368 Pile Hen  
 Class 5369 Pile Cockrel  
 Class 5370 Pile Pullet  
 Class 5371 Cuckoos/ Creoles Cock  
 Class 5372 Cuckoos/ Creoles Hen  
 Class 5373 Cuckoos/ Creoles Cockrel  
 Class 5374 Cuckoos/ Creoles Pullet  
 Class 5375 A.O.C. Old English Game Cock  
 Class 5376 A.O.C. Old English Game Hen  
 Class 5377 A.O.C. Old English Game Cockrel  
 Class 5378 A.O.C. Old English Game Pullet  
 CHAMPION OLD ENGLISH GAME BANTAM

#### **GAME BANTAMS: MODERN GAME**

Class 5379 Black Red Cock  
 Class 5380 Black Red Hen  
 Class 5381 Black Red Cockrel  
 Class 5382 Black Red Pullet  
 Class 5383 Pile Cock  
 Class 5384 Pile Hen  
 Class 5385 Pile Cockrel  
 Class 5386 Pile Pullet  
 Class 5387 Partridge Cock  
 Class 5388 Partridge Hen  
 Class 5389 Partridge Cockrel  
 Class 5390 Partridge Pullet  
 Class 5391 Wheaten Black tail Cock  
 Class 5392 Wheaten Black tail Hen  
 Class 5393 Wheaten Black tail Cockrel  
 Class 5394 Wheaten Black tail Pullet  
 Class 5395 Wheaten Blue Tail Cock  
 Class 5396 Wheaten Blue Tail Hen  
 Class 5397 Wheaten Blue Tail Cockrel  
 Class 5398 Wheaten Blue Tail Pullet  
 Class 5399 Blue Red Cock

Class 5400 Blue Red Hen  
 Class 5401 Blue Red Cockrel  
 Class 5402 Blue Red Pullet  
 Class 5403 Duckwing AC Cock  
 Class 5404 Duckwing AC Hen  
 Class 5405 Duckwing AC Cockrel  
 Class 5406 Duckwing AC Pullet  
 Class 5407 Birchen Cock  
 Class 5408 Birchen Hen  
 Class 5409 Birchen Cockrel  
 Class 5410 Birchen Pullet  
 Class 5411 Brown Red Cock  
 Class 5412 Brown Red Hen  
 Class 5413 Brown Red Cockrel  
 Class 5414 Brown Red Pullet  
 Class 5415 Ginger Cock  
 Class 5416 Ginger Hen  
 Class 5417 Ginger Cockrel  
 Class 5418 Ginger Pullet  
 Class 5419 Crele Cock  
 Class 5420 Crele Hen  
 Class 5421 Crele Cockrel  
 Class 5422 Crele Pullet  
 Class 5423 AORC Cock  
 Class 5424 AORC Hen  
 Class 5425 AORC Cockrel  
 Class 5426 AORC Pullet

#### **A.O.V. GAME**

Class 5427 Indian Game Dark Cock  
 Class 5428 Indian Game Dark Hen  
 Class 5429 Indian Game Dark Cockrel  
 Class 5430 Indian Game Dark Pullet  
 Class 5431 Indian Game A.O.C. Cock  
 Class 5432 Indian Game A.O.C. Hen  
 Class 5433 Indian Game A.O.C. Cockrel  
 Class 5434 Indian Game A.O.C. Pullet  
 Class 5435 Jubilee Game Cock  
 Class 5436 Jubilee Game Hen  
 Class 5437 Jubilee Game Cockrel  
 Class 5438 Jubilee Game Pullet  
 Class 5439 Australian Game Black Red Cock  
 Class 5440 Australian Game Black Red Hen  
 Class 5441 Australian Game Black Red Cockrel  
 Class 5442 Australian Game Black Red Pullet  
 Class 5443 Australian Game AOC Cock  
 Class 5444 Australian Game AOC Hen  
 Class 5445 Australian Game AOC Cockrel  
 Class 5446 Australian Game AOC Pullet  
 Class 5447 Malay Game AC Cock

Class 5448 Malay Game AC Hen  
Class 5449 Malay Game AC Cockrel  
Class 5450 Malay Game AC Pullet  
Class 5451 Pitt A.C. Cock  
Class 5452 Pitt A.C. Hen  
Class 5453 Pitt A.C. Cockrel  
Class 5454 Pitt A.C. Pullet  
Class 5455 Pitt Muff A.C. Cock  
Class 5456 Pitt Muff A.C. Hen  
Class 5457 Pitt Muff A.C. Cockrel  
Class 5458 Pitt Muff A.C. Pullet  
Class 5459 A.O.V. Game Cock  
Class 5460 A.O.V. Game Hen  
Class 5461 A.O.V. Game Cockrel  
Class 5462 A.O.V. Game Pullet  
CHAMPION AOV GAME BANTAM  
CHAMPION HARD FEATHER BANTAM  
RESERVE CHAMPION HARD FEATHER

#### **BANTAM**

Class 5463 Australian Game Blue Red Cock

#### **BACK YARD FOWL**

Class 5464 BACK YARD FOWL Cock  
Class 5465 BACK YARD FOWL Hen  
CHAMPION BACK YARD FOWL

#### **BREEDING PAIR OF FOWLS**

Class 5466 Large Soft Feather  
Class 5467 Soft Feather Bantam  
Class 5468 Large Hard Feather  
Class 5469 Hard Feather Bantam  
Class 5470 Water Fowl  
CHAMPION BREEDING PAIR  
PAIR OF PULLETS

Class 5471 Large Soft Feather  
Class 5472 Soft Feather Bantam  
Class 5473 Large Hard Feather  
Class 5474 Hard Feather Bantam  
Class 5475 Waterfowl Ducks  
CHAMPION PAIR OF PULLETS  
GRAND CHAMPION FOWL  
RESERVE GRAND CHAMPION FOWL

#### **CAGED BIRDS**

##### **CANARIES**

Class 5476 Canary Cock - any variety  
Class 5477 Canary Hen - any variety

##### **BUDGERIGARS**

Class 5478 Light Green Cock

Class 5479 Light Green Hen  
Class 5480 Dark Green or Olive Green Cock  
Class 5481 Dark Green or Olive Green Hen  
Class 5482 Skyblue - includes violet blue series  
Cock  
Class 5483 Skyblue - includes violet blue series  
Hen  
Class 5484 Grey Cock  
Class 5485 Grey Hen  
Class 5486 Lutino or Albino Cock  
Class 5487 Lutino or Albino Hen  
Class 5488 Cinnamon Cock  
Class 5489 Cinnamon Hen  
Class 5490 Opaline Normal A.C. Cock  
Class 5491 Opaline Normal A.C. Hen  
Class 5492 Dominant Pied Cock  
Class 5493 Dominant Pied Hen  
Class 5494 Recessive Pied Cock  
Class 5495 Recessive Pied Hen  
Class 5496 Spangle A.C. Cock  
Class 5497 Spangle A.C. Hen  
Class 5498 A.O.C. Budgerigar Cock  
Class 5499 A.O.C. Budgerigar Hen  
CHAMPION BUDGERIGAR

##### **FINCHES**

Class 5500 Zebra A.C. Cock  
Class 5501 Zebra A.C. Hen  
Class 5502 Ghoulian A.C. Cock  
Class 5503 Ghoulian A.C. Hen  
Class 5504 Australian A.O.V. Cock  
Class 5505 Australian A.O.V. Hen  
Class 5506 Foreign A.V. Cock  
Class 5507 Foreign A.V. Hen  
CHAMPION FINCH

##### **QUAILS**

Class 5508 Quail A.V. Cock  
Class 5509 Quail A.V. Hen  
CHAMPION QUAIL

##### **DOVES**

Class 5510 Dove A.V. Cock  
Class 5511 Dove A.V. Hen  
CHAMPION DOVE

##### **LOVE BIRDS**

Class 5512 Love Bird Peach Face c e A.C. Cock  
Class 5513 Love Bird Peach Face c e A.C. Hen  
Class 5514 Love Bird A.O.V. Cock  
Class 5515 Love Bird A.O.V. Hen  
CHAMPION LOVE BIRD

##### **PARROTS**

Class 5516 Australian Parrot Cock

Class 5517 Australian Parrot Hen  
Class 5518 Foreign Parrot Cock  
Class 5519 Foreign Parrot Hen  
CHAMPION PARROT  
CHAMPION CAGE BIRD  
RESERVE CHAMPION CAGE BIRD

### PIGEONS

#### SHOW PEN HOMER

Class 5520 Blue or black cheq. Cock  
Class 5521 Blue or black cheq. Hen  
Class 5522 Blue or black cheq. Young Cock  
Class 5523 Blue or black cheq. Young Hen  
Class 5524 Red or red cheq. Cock  
Class 5525 Red or red cheq. Hen  
Class 5526 Red or red cheq. Young Cock  
Class 5527 Red or red cheq. Young Hen  
Class 5528 Blue bar Cock  
Class 5529 Blue bar Hen  
Class 5530 Blue bar Young Cock  
Class 5531 Blue bar Young Hen  
Class 5532 Black. Cock  
Class 5533 Black. Hen  
Class 5534 Black. Young Cock  
Class 5535 Black. Young Hen  
Class 5536 Pied Cock  
Class 5537 Pied Hen  
Class 5538 Pied Young Cock  
Class 5539 Pied Young Hen  
Class 5540 Grizzle Cock  
Class 5541 Grizzle Hen  
Class 5542 Grizzle Young Cock  
Class 5543 Grizzle Young Hen  
Class 5544 Opal A.C. Cock  
Class 5545 Opal A.C. Hen  
Class 5546 Opal A.C. Young Cock  
Class 5547 Opal A.C. Young Hen  
Class 5548 AORC Cock  
Class 5549 AORC Hen  
Class 5550 AORC Young Cock  
Class 5551 AORC Young Hen  
CHAMPION SHOW PEN HOMER

#### RACING HOMER

Class 5552 Blue or black cheq. Cock  
Class 5553 Blue or black cheq. Hen  
Class 5554 Blue or black cheq. Young Cock  
Class 5555 Blue or black cheq. Young Hen  
Class 5556 Red or red cheq. Cock

Class 5557 Red or red cheq. Hen  
Class 5558 Red or red cheq. Young Cock  
Class 5559 Red or red cheq. Young Hen  
Class 5560 Bar A.C. Cock  
Class 5561 Bar A.C. Hen  
Class 5562 Bar A.C. Young Cock  
Class 5563 Bar A.C. Young Hen  
Class 5564 AORC Cock  
Class 5565 AORC Hen  
Class 5566 AORC Young Cock  
Class 5567 AORC Young Hen  
CHAMPION HOMER

#### BRITISH SHOW RACER

Class 5568 British Show Racer Bar AC Cock  
Class 5569 British Show Racer Bar AC Hen  
Class 5570 British Show Racer Bar AC Young Cock  
Class 5571 British Show Racer Bar AC Young Hen  
Class 5572 British Show Racer Cheq AC Cock  
Class 5573 British Show Racer Cheq AC Hen  
Class 5574 British Show Racer Cheq AC Young  
Cock  
Class 5575 British Show Racer Cheq AC Young  
Hen  
Class 5576 British Show Racer AORC Cock  
Class 5577 British Show Racer AORC Hen  
Class 5578 British Show Racer AORC Young Cock  
Class 5579 British Show Racer AORC Young Hen  
CHAMPION SHOW RACER

#### FANCY PIGEONS

Class 5580 German Beauty Homers ARC Cock  
Class 5581 German Beauty Homers ARC Hen  
Class 5582 German Beauty Homers ARC Young  
Cock  
Class 5583 German Beauty Homers ARC Young  
Hen  
Class 5584 Fantail ARC. Cock  
Class 5585 Fantail ARC. Hen  
Class 5586 Fantail ARC. Young Cock  
Class 5587 Fantail ARC. Young Hen  
Class 5588 Jacobins ARC. Cock  
Class 5589 Jacobins ARC. Hen  
Class 5590 Jacobins ARC. Young Cock  
Class 5591 Jacobins ARC. Young Hen  
Class 5592 Pigmy Pouter ARC Cock  
Class 5593 Pigmy Pouter ARC Hen  
Class 5594 Pigmy Pouter ARC Young Cock  
Class 5595 Pigmy Pouter ARC Young Hen  
Class 5596 Brunner Pouter ARC Cock

Class 5597 Brunner Pouter ARC Hen  
Class 5598 Brunner Pouter ARC Young Cock  
Class 5599 Brunner Pouter ARC Young Hen  
Class 5600 Modena Schietti ARC Cock  
Class 5601 Modena Schietti ARC Hen  
Class 5602 Modena Schietti ARC Young Cock  
Class 5603 Modena Schietti ARC Young Hen  
Class 5604 Modena Gazzi ARC Cock  
Class 5605 Modena Gazzi ARC Hen  
Class 5606 Modena Gazzi ARC Young Cock  
Class 5607 Modena Gazzi ARC Young Hen  
Class 5608 Limerick Tumbler ARC. Cock  
Class 5609 Limerick Tumbler ARC. Hen  
Class 5610 Limerick Tumbler ARC. Young Cock  
Class 5611 Limerick Tumbler ARC. Young Hen  
Class 5612 Blondinettes ARC Cock  
Class 5613 Blondinettes ARC Hen  
Class 5614 Blondinettes ARC Young Cock  
Class 5615 Blondinettes ARC Young Hen  
Class 5616 Satinettes ARC. Cock  
Class 5617 Satinettes ARC. Hen  
Class 5618 Satinettes ARC. Young Cock  
Class 5619 Satinettes ARC. Young Hen  
Class 5620 Bokhara Trumpeter ARC. Cock  
Class 5621 Bokhara Trumpeter ARC. Hen  
Class 5622 Bokhara Trumpeter ARC. Young Cock  
Class 5623 Bokhara Trumpeter ARC. Young Hen  
Class 5624 Stargard Shaker ARC. Cock  
Class 5625 Stargard Shaker ARC. Hen  
Class 5626 Stargard Shaker ARC. Young Cock  
Class 5627 Stargard Shaker ARC. Young Hen  
Class 5628 Chinese Owl ARC Cock  
Class 5629 Chinese Owl ARC Hen  
Class 5630 Chinese Owl ARC Young Cock  
Class 5631 Chinese Owl ARC Young Hen  
Class 5632 English Dragoons ARC Cock  
Class 5633 English Dragoons ARC Hen  
Class 5634 English Dragoons ARC Young Cock  
Class 5635 English Dragoons ARC Young Hen  
Class 5636 Australian Performing Tumbler ARC  
Cock  
Class 5637 Australian Performing Tumbler ARC  
Hen  
Class 5638 Australian Performing Tumbler ARC  
Young Cock  
Class 5639 Australian Performing Tumbler ARC  
Young Hen  
Class 5640 A.O.V Pigeon (state variety) Cock  
Class 5641 ARC Archangel Pigeon Cock

Class 5642 ARC Archangel Pigeon Hen  
Class 5643 ARC Archangel Pigeon Young Hen  
Class 5644 ARC Archangel Young Cock  
Class 5645 A.O.V Pigeon (state variety) Hen  
Class 5646 A.O.V Pigeon (state variety) Young  
Cock  
Class 5647 A.O.V Pigeon (state variety) Young  
Hen  
CHAMPION FANCY PIGEON

#### **UTILITY PIGEONS**

Class 5648 King White Cock  
Class 5649 King White Hen  
Class 5650 King White Young Cock  
Class 5651 King White Young Hen  
Class 5652 King A.O.C Self Cock  
Class 5653 King A.O.C Self Hen  
Class 5654 King A.O.C Self Young Cock  
Class 5655 King A.O.C Self Young Hen  
Class 5656 King Bar A.C Cock  
Class 5657 King Bar A.C Hen  
Class 5658 King Bar A.C Young Cock  
Class 5659 King Bar A.C Young Hen  
Class 5660 King A.C. Cheq Cock  
Class 5661 King A.C. Cheq Hen  
Class 5662 King A.C. Cheq Young Cock  
Class 5663 King A.C. Cheq Young Hen  
Class 5664 King A.O.R.C. Cock  
Class 5665 King A.O.R.C. Hen  
Class 5666 King A.O.R.C. Young Cock  
Class 5667 King A.O.R.C. Young Hen  
Class 5668 Carneau Cock  
Class 5669 Carneau Hen  
Class 5670 Carneau Young Cock  
Class 5671 Carneau Young Hen  
Class 5672 Utility A.O.V. Cock  
Class 5673 Utility A.O.V. Hen  
Class 5674 Utility A.O.V. Young Cock  
Class 5675 Utility A.O.V. Young Hen  
CHAMPION UTILITY PIGEON

#### **BREEDING PAIRS**

Class 5676 Show Pen Homers  
Class 5677 Fancy pigeons  
Class 5678 Utility  
CHAMPION PAIR OF PIGEONS  
GRAND CHAMPION PIGEON  
RESERVE GRAND CHAMPION PIGEON

## SECTION 6 - Woodchop

Steward: Jamie Dingle

Entries due Friday 17<sup>th</sup> April via Queensland Axemans Assoc

<https://www.revolutionise.com.au/qaa/events/346208>

Sawing wood – pine

Chopping wood – pine

**Points Score award with Mitchell Show**

**Day 1 Friday 8th May; 10.30am start**

**Day 2 Saturday 9th May, 930am start**

Events will be cancelled without a minimum of 3 nominations.

Trophy for Combined score - Roma; to be awarded to the axeman with the most points for all Handicap events who compete at both Roma and Mitchell shows over the three days. Points awarded on a 3-2-1 basis.

The Roma Show Committee reserves the right to cancel or amend any event.

### Friday

- Class 6001** 250 S/B Handicap  
250mm S/B Handicap
- Class 6002** 275 S/B Handicap  
275mm S/B Handicap
- Class 6003** 275 U/H Handicap  
275mm U/H Handicap
- Class 6004** 300 U/H Handicap  
300mm U/H Handicap
- Class 6005** 325 **S/B Qld Elimination  
Championship (min of 8)**  
325mm S/B Qld Elimination Championship  
(minimum 8 entries required)
- Class 6006** 275 U/H Vets Handicap  
275mm U/H Vets Handicap
- Class 6007** 450 DHS Handicap  
450mm DHS Handicap
- Class 6008** 400 Jack n Jill Handicap  
400mm Jack n Jill Handicap
- Class 6009** 275 2 Man Combo Handicap  
275mm 2 Man Combo Handicap

### Saturday

- Class 6010** 300 S/B Handicap  
300mm S/B Handicap
- Class 6011** 300 U/H Handicap  
300mm U/H Handicap
- Class 6012** 275 U/H Handicap  
275mm U/H Handicap
- Class 6013** 275 S/B Handicap  
275mm S/B Handicap
- Class 6014** 250 S/B Vets Handicap  
250mm S/B Vets Handicap
- Class 6015** 400 Jack n Jill Handicap  
400mm Jack n Jill Handicap
- Class 6016** 400 DHS Handicap  
400mm DHS Handicap
- Class 6017** 300 **S/B Championship**  
300mm S/B Championship  
Trophy to be awarded to the axeman with the  
most points for all  
Handicap Events who compete at both  
Roma (09 and 10 May) and Mitchell Shows (13  
May) over the three days  
Points awarded on 3-2-1 basis

## SECTION 8 –

All enquiries to Aleacea Nixon 0709 741818

Friday night in the Machinery Alley area near the Woochop arena.

Saturday night in front of  
Grandstand

Names and details taken  
on the night.

Dates and times may vary  
depending on number of  
entries.

**BROWN AND HURLEY AGRICULTURE** **TRACTOR PULL** **ROMA SHOW**

**TRACTOR PULL FARMERS CHALLENGE TUG A WAR**

**Entry \$10 per Team**

**FRIDAY 8<sup>TH</sup> MAY & SATURDAY 9<sup>TH</sup> MAY NIGHTS**  
(IF 6+ TEAMS ENTER, FINALS SATURDAY NIGHT)

**TEAMS OF 4 (BOTH SEXES) IN FARMERS CHALLENGE**  
**TEAMS OF 6 (BOTH SEXES) FOR TUG A WAR & TRACTOR PULL**

**PRIZE MONEY TO BE WON!**

## SECTION 9 - Lego

Total Prize Pool \$230

Chief Steward: Erin Brumpton

Entry fee \$1.

All entries to be dropped off at the Roma Library by Tuesday 5th May.

Drop off at the Roma Library from Monday 4th May, attention Erin Brumpton.



\$150 donated by Roma Library

All LEGO models to be entered on a base board not wider than 38cm and able to be displayed on a shelf. Lego FAQ is available in the Documents and Download section on Showday Online.

Entries to be submitted on Lego/Duplo base-plate, or blu-tacked to a strong reinforced, flat surface, or displayed in a clear protective case. Early entries can be dropped off care of the Roma Library; regular entries as usual by arrangement with the Show Pavillion. Need help? The library can help with printing entry forms, free loan of Lego base-plates & meeting other entry requirements – contact the Roma Library for more info.

## SECTION 9 - LEGO

**Class 9000** Junior Class (under 5) Any brand large connecting blocks

First place receives ribbon

**Class 9001** School aged Class - Lego: Build from a kit

Ribbon winner

**Class 9002** School Aged Class - Lego: Own Creation

Entries to include a small explanation about what's happening in the scene - parent can scribe the story on behalf of the child. Will also accept voice/video recording of explanations or diagrams/plans.

winner ribbon

**Class 9003** Open Class (all Ages) - Botanical (sponsored by CBH, Local gardener)

Any build - own or set/kit - with a botanical, or horticultural theme. Flowers, plants, garden, bouquets etc.

Ribbon winner

**Class 9004** Open Class (all ages) Sponsored by CBH

Any Build - own kit or set/kit - with over 1000pieces.

ribbon winner

**Class 9005** Open Class (all ages) Lego Master

Any build - own or set/kit - with over 5000 pieces. Entries to include a rough estimate of hours clocked on the build process, to help audience gain an appreciation of the time commitment. Progress photos are also welcome.

Lego Champion winner

## **SECTION 10 - Art**

**CHIEF STEWARD:** Carol Curran

**ASSISTANT STEWARDS:** Deborah Campbell

### **ENTRIES:**

ENTRIES CLOSE **MONDAY 4th MAY 2026 AT 11.00AM – NO LATE ENTRIES WILL BE ACCEPTED.**

**ENTRIES CAN BE FILLED OUT ON SHOWDAY ONLINE OR ON ENTRY FORMS, TOGETHER WITH ARTWORKS, TO BE DELIVERED TO THE SHOWGROUNDS ON MONDAY 4th MAY 2026 FROM 9.00AM UNTIL 11.00AM.**

Deliver to the Show Pavilion (main building behind the Grandstand), Bassett Park Showgrounds.

**Classes 1001– 1010 \$5.00 (incl GST) per entry**

**Classes 1012 - 1024 \$2.00 (incl GST) per entry**

EXHIBITS MUST BE DELIVERED for hanging on 4th May 2026 no later than 11.00am 'D' or Triangle links must be attached to the back of the artworks to enable them to be hung on the Roma Show Society's hanging system. These are available from Ace Drapers or Crazy Sam's.

### **TROPHIES AND PRIZE MONEY:**

Specified with each Class. All Prize Money is Inclusive of GST

### **RULES & REGULATIONS:**

In addition to the Roma Show Society Rules & Regulations listed at the front of the main schedule, the following will apply to this section.

- All exhibits must be the original work of the entrant and have been completed in the last 12 months. Entrants confirm their work does not infringe copyright laws.
- All exhibits are to be clearly marked with name, address, phone and class on the back/base of each entry.
- All exhibits are to be clearly marked with a Price and be for genuine sale. The Roma Show Society retains 20% of all sales. NO WORK FOR DISPLAY ONLY. Children's art may be marked NFS (Not For Sale).
- LOCAL is defined as any entrant living within the Maranoa Regional Council area.
- NOVICE is defined as any entrant who has not won a prize in this Section/Class previously.
- Exhibits for hanging must be framed (if not a stretched canvas) and have 'D' rings/hanging wire attached. They are not to exceed 120cm x 120cm including frames.

**Any exhibit deemed too difficult to hang may not be hung at the discretion of the Stewards.**

- Allowance is made for Junior section competitors to enter unframed entries. The entry must be mounted on a firm board/mounting board (not cardboard) with wire/string attached appropriate for hanging.

**Any exhibit deemed too difficult to hang may not be hung at the discretion of the Stewards.**

- All expenses in relation to insurance, packing, delivery, and transport to and from the competition of exhibits shall be borne by the competitor. All work will be under cover and all reasonable care will be taken but the Roma Show Society accepts no responsibility for the loss or damage of any item at any time.
- Instructions for return, plus postage if needed, must be included with entries.
- It is a condition of entry that all exhibits are available to be photographed for news/promotion of the Roma Show Society and in particular for promotion of Section 10 – Art.
- **Collection of exhibits will be the entrant's responsibility** unless other arrangements are made eg: return postage included with entry. The Show Pavilion will close at 6pm Saturday 9th May 2026. Collection of exhibits can be made the next day, **Sunday 10th May 2026, between 8.30am until 10.00am – NO LATER PLEASE as it Mother's Day.**

- If an exhibit is not collected by 10.00am on 10th May 2026 from Bassett Park and alternate arrangements have not been secured, it becomes the property of the Roma Show Society and may be destroyed, sold or otherwise disposed of at their discretion.

**Please note the small number of volunteers for the Art Section make it very difficult to transport any left artworks to the Maranoa Artists' studio, so please make arrangements for a friend/family member to collect your artworks if you are unable to do so yourself.**

- All prize money is to be collected from the Main office on Saturday 4pm to 6pm After this time, any unclaimed prize money will be dealt with in accordance with legislative requirements. At all times, it is the sole responsibility of the winner to collect his or her prize.

• Competitors Declaration - All competitors and exhibitors have read and understand the Rules and Regulations and agree to be bound in all respects by these Rules and Regulations.

- Competitors and exhibitors also consent and agree that the Roma Show Society has the right to take or use photographs of him or her (and/or your property) and use the photos in any and all marketing and media worldwide, including online, now and in the future. All entrants compete at their own risk. No claim in any form shall be made by the entrant, their families, friends and/or representative against the Roma Show Society or person/s associated with the holding of the competition/exhibit.

**\*\*PLEASE NOTE: Schedules are subject to change at any time and without Notice\*\***

**'D' LINKS OR TRIANGLE HANGERS MUST BE AT LEAST 1CM WIDE TO FIT OUR HANGING SYSTEM. THE TRIANGLE LINKS MAY BE PURCHASED FROM ACE DRAPERS NO 2 OR CRAZY SAM'S.**

## Section 10: Painting –

### Open

#### **Class 1001 Oils**

First Prize \$150

Second prize \$50

Sponsored by SM & KA Duff Builders

#### **Class 1002 Acrylics**

First Prize \$150

Second prize \$50

Sponsored by Maranoa Artists

#### **Class 1003 Mixed Media**

First Prize \$150

Second prize \$50

Sponsored by Brett Cherry Builders

#### **Class 1004 Watercolour**

First Prize \$150

Second prize \$50

Sponsored by Owens Maranoa Funeral Service and Maranoa Artists Inc

Peter Corfe Memorial Award - \$50

Most promising Local Painter from Classes 1001 - 1004

Prize Money \$50 (Sponsored by Gelhco Plumbing Services)

#### **Class 1005 Pastel**

First Prize \$150

Second prize \$50

Sponsored by Owens Maranoa Funeral Service

#### **Class 1006 Drawing - Pencil, Charcoal or Ind**

First Prize \$150

Second prize \$50

Sponsored by Owens Maranoa Funeral Service

#### **Class 1007 Still Life**

First Prize \$150

Second prize \$50

Sponsored by Aquazon Plumbing

#### **Class 1008 Miniature - Painting or Print**

The perimeter of the framed

artwork must not exceed 40cm (eg

10cm x 10cm, or any variation of

this size e.g. 12cm x 8cm)

Sponsored by Rosenberger Realty and Valuations

#### **Class 1009 Local Open - Any Medium**

First Prize \$150

Second prize \$50

Sponsored by Owens Maranoa Funeral Service and Mavis Bunt

George Osborne Memorial Award - \$50

Most promising Local Painter from Classes 1005 - 1009

Prize Money \$50 (Sponsored by Owens Maranoa Funeral Service)

#### **Class 1010 Folk Art & Decorative Painting**

First Prize \$100

Second prize \$50

Sponsored by Wild Pony

## Section 10: Painting - Junior, Any Medium

First Prize \$25 Sponsored by Mark Humphreys

Second Prize \$10 Sponsored by Owens Maranoa Funeral Service

#### **Class 1012 16 - 17 Years**

#### **Class 1013 13 -15 Years**

**Class 1014** 11 - 12 Years

**Class 1015** 15 10 Years & Under

Gail Humphreys Memorial Award Junior Painting Section

1st Prizes for Junior Painting Section

**GAIL HUMPHREYS MEMORIAL AWARD**

**Achievement over Adversity Award**

Any piece created within Section 10 (Classes 1001 – 1015) produced by someone living with a life challenging adversity (Must indicate your wish to be considered for this award by noting a Disability on your entry form)

## **POTTERY SECTION**

**Class 1016** Any article of pottery: Hand built - Novice

**Class 1017** Any article of pottery: Hand built - Open

**Class 1018** 8 Any article of pottery: Wheel thrown - Novice

**Class 1019** Any article of Pottery: Wheel thrown - Open

Sponsored by Leigh Griffin

Sponsor: Roma Show Society 1st prize \$30

2nd prize \$20

**Class 1020** Any article of pottery: Sculpture - Open

**Class 1021** Any clay construction: Imaginative item - Open

**Class 1022** Junior pottery - Any style: Under 15 years

Best Overall Entry - \$50

Sponsor – Leigh Griffin

## **MODEL / MINIATURE PAINTING SECTION**

All models must be painted in person in a minimum of three colours. Artists may purchase, print or sculpt their own models.

**Class 1023** Any Creature

Must be a maximum of 50mm in height and 50mm in width and length

**Class 1024** Any Vehicles / Monsters

Must be a maximum of 300mm in height and 300mm in width and length.

# SECTION 11 - Handicrafts

Chief Steward: Jenny Ferry: 0429 309 026

Annette Huntley: 0427 233 373

ENTRIES DROP OFF TIMES: MONDAY 4<sup>TH</sup> MAY BETWEEN 1.00pm to 5.00pm and TUESDAY 5<sup>TH</sup> MAY 8am to 10am.

**NO LATE ENTRIES WILL BE ACCEPTED**

**ENTRY FORMS AVAILABLE FROM WEBSITE OR CAN BE DONE ONLINE VIA SHOWDAY.**

All manual entry forms to: secretary@romashow.com

Entry Fee: Adults Exhibitors: \$2.00

Junior Exhibitors: \$1.00

Entries to be delivered to the Main Pavilion at the following times:

## **TROPHIES AND PRIZE MONEY:**

(Unless otherwise specified)

First: \$10.00 (GST incl)

Second: \$5.00 (GST incl)

## **RULES & REGULATIONS:**

In addition to the Roma Show Society Rules & Regulations listed at the front of the main schedule, the following will apply to this section.

1. All entries to be accompanied with a "filled in" entry form.
2. Exhibits must be the bona-fide work of the exhibitor.
3. Synthetic yarns are acceptable
4. Exhibits (other than patchwork and tapestry) must not have been laundered.
5. Large patchwork quilts to come with rod pockets attached.
6. Each exhibit is eligible for competition in one class only.
7. An entrant can submit no more than two entries in same class.
8. If you wish to sell your entry clearly mark with a Price or NFS. The Roma Show Society retains 20% of all sales.
9. All prize money is to be collected from the Main office between 4pm and 6pm on Saturday 9th May. After this time, any unclaimed prize money will be dealt with in accordance with legislative requirements. At all times, it is the sole responsibility of the winner to collect his or her prize.
10. The pavilion will close at 5 pm on Saturday 9th May 2026. NO COLLECTION OF ENTRIES WILL HAPPEN AFTER CLOSURE. Collection of entries will be on Sunday 10th May 2026 from 9am to 10:00am. **Please DO NOT** remove any entries without a steward present, as paperwork need to be accounted for. If unable to collect your entries during this time please advise Chief Steward for alternative arrangement.

## **Champion Piece of Handicraft**

**To be awarded to a person residing within 200km of Roma.**

**Shield**

## **Knitting**

**Class 1101** Hand knitted garment - any ply

**Class 1102** Cap or Beret or Scarf

**Class 1103** Knitted Toy

**Class 1104** Any article or garment using no more than one ball of wool or synthetic.

Label from ball to be attached.

**Class 1105** Any item knitted by a person with a disability

**Class 1106** Knitted rug, shawl or poncho

**Class 1107** Any knitted article or garment not previously listed

Best entry Knitting - \$25

## Crochet

**Class 1108** Crochet garment - in any yarn

**Class 1109** Article or garment using no more than one ball, in wool or synthetic. Label from ball to be attached.

**Class 1110** Any item crocheted by a person with a disability

**Class 1111** Rug - any yarn

**Class 1112** Shawl or cape - any yarn

**Class 1113** Doily or table centre - ANY YARN

**Class 1114** Handkerchief (edges) - in cotton

**Class 1115** Crochet toy

**Class 1116** Tatting (any item)

**Class 1117** Amigurumi crochet item (miniature crochet)

**Class 1118** Any crochet item not previously listed

Best Entry Crochet

Prize kindly donated by ACE Drapers

## Hand Embroidery/Needlework

**Class 1119** Piece of embroidery

**Class 1120** Place mat, tray cloth, runner or tablecloth

**Class 1121** An article of cross stitch

**Class 1122** Table centre - counted thread cross stitch, hardanger etc

**Class 1123** Tapestry - embellishments allowed.

**Class 1124** Any other embroidered/needlework article not previously listed

Best Entry Hand Embroidery/Needlework

Prize kindly donated by Aileen Knowles

## Machine Work

**Class 1125** Garment for Child

**Class 1126** Garment for Adult

**Class 1127** Fabric bag

**Class 1128** Machine embroidered article

**Class 1129** Any other machine sewn article

Best Entry Machine Work

Prize kindly donated by Isla Grulke

**Class 1130** Machine Embroidered Toy - in the hoop

**Class 1131** Machine Embroidered Toy - not in the hoop

**Class 1132** Machine Embroidered Bag - in the hoop

**Class 1133** Machine Embroidered Bag - not in the hoop

**Class 1134** Machine Embroidery - on a commercial article

Example: Onesie, apron, calico bag

**Class 1135** Machine embroidered table runner

**Class 1136** Machine Embroidered Wall Hanging

**Class 1137** Quilt Featuring Machine Embroidery

**Class 1138** Any other Machine sewn article

## Patchwork

**Class 1139** Cot quilt - self quilted

Must be safe for use of child under 3 years of age  
Machine sewn binding is acceptable

Judges will focus on the look/feel being appropriate for a baby

**Class 1140** Patchwork quilt - self quilted (larger than cot quilt)

focus of judging will be on piecing/applique then quilting and overall aesthetic

**Class 1141** Patchwork quilt - commercially quilted

focus of judging will be on overall aesthetic. Work done by entrant and commercial quilting to compliment

**Class 1142** Table runner/placemats/table centre

Must include piecing or applique

Judging will focus on the overall aesthetic and suitability for purpose

**Class 1143** Wall hanging

Must include piecing or applique

Judging will focus on the overall aesthetic and suitability for purpose

**Class 1144** Hand quilted article

Judging will focus on hand quilting as the first priority and then overall aesthetic.

The item does not need to be patchwork as hand quilting is the focus

**Class 1145** Collaborative quilt - made by 2 or more people

Judges will focus on overall aesthetic.

A commercial quilter is not part of a collaborative quilt. If multiple people were involved in the top quilt, and it was commercially quilted, it may still be entered here.

**Class 1146** Any other article of patchwork not previously mentioned

Best entry Patchwork - \$50

Best entry First prize Patchwork - \$10

Best entry Second Prize Patchwork - \$5

**Class 1147** Quilt featuring machine embroidery

**Class 1148** 24" Mini Quilt

## Scrapbooking

Scrapbooking section prizes kindly donated by Chris's Scrapbooking Shop

**Class 1149** Off-the-page scrapbooking

**Class 1150** 3 Greeting cards with distinct techniques mounted for display

**Class 1151** Single page

**Class 1152** Double page

## Miscellaneous

**Class 1153** Recycle - Repurpose - Reuse - Stating which materials have been recycled

**Class 1154** Soft toy (not knitted/crochet/machine embroidered)

**Class 1155** Cushion

**Class 1156** Pin cushion - any medium

**Class 1157** Coat hanger cover - any medium

**Class 1158** Piece of macrame

**Class 1159** Diamond Art - half drill or full drill

**Class 1160** Leather work - Plaited article

**Class 1161** Leather work - Any other article (not using a kit)

**Class 1162** Leather work - any other article (using a kit)

**Class 1163** Woodwork - any craft

**Class 1164** Mosaic - any medium

**Class 1165** Any article of handicraft by a person with a disability

Article other than knitting or crochet

**Class 1166** Any article of handicraft not previously listed

Best Entry Miscellaneous Handicraft - \$25

## Junior Section Open to boys & girls 14 years & under

**Class 1167** Up to 8years old - Hand decorated "Mother's Day" Card

**Class 1168** Up to 8 years old - Recycle - Repurpose - Reuse

**Class 1169** 8 - 14years old - Hand decorated "Mother's Day" Card

**Class 1170** 8 - 14 years old - Recycle - Repurpose - Reuse

**Class 1171** Any knitted article or garment

**Class 1172** Any crochet article or garment

**Class 1173** Any needlework/embroidery article

**Class 1174** Any sewn article or garment

**Class 1175** Any patchwork article (First \$10 Second \$5) [donated by Patchwork & Crafters Inc]

**Class 1176** Any scrapbooking article

**Class 1177** Any other article of craft not mentioned

## **SECTION 12 - Cookery**

**CHIEF STEWARD: Annette Huntley Ph: 0427 233 373**

ASSISTANT STEWARDS: Tanya West; Lesley Dillon; Jenny Ferry; Tennielle Limpus;

**ENTRIES CLOSE THURSDAY 7th MAY 2026 AT 11.30AM – No late entries will be accepted**

Adult Exhibitors: \$2.00 per entry

Junior Exhibitors: \$1.00 per entry

**ENTRY FORMS AVAILABLE FROM WEBSITE OR CAN BE DONE ONLINE VIA SHOWDAY.**

Entry forms must be completed by the exhibitor. All entries are to be taken to the Main Pavilion.

### **PRIZES:**

First: \$10.00 cash (Unless otherwise specified)

Second: \$5.00 cash (Unless otherwise specified)

Vouchers and Ribbons will be awarded to the following:

- Grand Champion Exhibit.
- Champion Exhibits in both the Open and in the Junior sections in the General Cookery Section.
- Champion Exhibits in both the Open and in the Junior sections in the Decorated Iced Cakes Section.
- Champion Preserve.
- First & Second Ribbons in all Junior sections.

Vouchers will be awarded to the following:

- Most Points accumulated in the Open Section (general cookery) and in (Decorated Cakes).
- Most Points accumulated in the Junior Section in (general cookery) and in (Decorated Cakes).
- Most Points accumulated from classes (People living with a disability).
- Most Points accumulated from classes (Confectionary & Preserves).

Special Classes – Extra Cash Prizes will be awarded to the following:

- Class 1207 – Rainbow Swirl/Tie Dye Cake – First \$20, Second \$10
- Class 1211 – Rich Fruit Cake - First \$40, Second \$20
- Class 1228 – Boiled Fruit Cake – Men’s Section - First \$20, Second \$10

Decorated Iced Cakes– Extra Cash Prizes will be awarded to the following

Professional Section – First \$50, Second \$30

- Home Baker Section – First \$30, Second \$15

- Junior Section – First \$20, Second \$10

### **RULES & REGULATIONS PLEASE READ THE FOLLOWING CAREFULLY**

1. A completed entry form must accompany entries. Please state collection details.
2. Entries can be dropped off between 5pm and 7pm on Wednesday 6th May or between 8am and 11.30am on Thursday 7th May. All entries must be in the main Pavilion no later than 11.30am on Thursday 7th May 2026.
3. No exhibits will be accepted after judging commences.
4. Judging will commence at 12 noon on Thursday 7th May 2026.
5. PLEASE NOTE: COOKING MUST BE THEIR OWN (when multiple family members enter the same class, they MUST be different batch).
6. One entry only, per person, per class, will be permitted unless otherwise mentioned. Except in Preserves section – more than one entry is allowed providing it is of a different variety).
7. Quality, taste and flavour receive first consideration.
8. Jams will be judged on points being given for colour, flavour and general appearance of exhibit. The judge in this section reserves the right to open one jar in each collection if they so desire.
- Preserves must be presented in glass jars, 375gm – 500gm with white screw top lids. If a white lid is not possible, please attach a neat circle of white paper instead. Jars must be filled to within 1.25cm from the top.
9. Exhibitors must present entries on white paper plates (or similar).
10. All cooking must be covered with glad wrap.
11. The Pavilion will close at 5pm on Saturday 9th May 2026. Entries can be collected between 5.30pm and 6.30pm Saturday, or by prior arrangement on Sunday 10th May between 8.30am and 11am. Please DO NOT remove any entries without a steward present as paper work needs to be accounted for. Any items not collected by 11am Sunday will be discarded.
12. All prize money is to be collected from the Main office between 4pm and 6pm on Saturday 9th May. After this time, any unclaimed prize money will be dealt with in accordance with legislative requirements. At all times, it is the sole responsibility of the winner to collect his or her prize.

13. Competitors Declaration – All competitors and exhibitors have read and understand the Rules and Regulations and agree to be bound in all respects by these Rules and Regulations. Competitors and exhibitors also consent and agree that the Roma Show Society has the right to take or use photographs of him or her (and/or your property) and use the photos in any and all marketing and media worldwide, including online, now and in the future. All entrants compete at their own risk. No claim in any form shall be made by the entrant, their families, friends and/or representative against the Roma Show Society or person/s associated with the holding of the competition/ exhibit.

**\*\*\*PLEASE NOTE – Schedules are subject to change at any time and without notice\*\*\***

## **ADULTS OPEN SECTION CAKES**

### **Class 1201 ORANGE BAR CAKE - Any recipe**

Cook in a bar tin. Iced on top with orange icing. Orange rind may be used to decorate.

### **Class 1202 BANANA CAKE - Iced on top with lemon icing**

Cake tin not stipulated but we suggest bar tin or square tin

### **Class 1203 SPONGE SANDWICH**

– Cooked with butter in round sponge tins. Use jam to join the sponge and sprinkle icing sugar on top (do not ice).

### **Class 1204 CARROT CAKE**

– Iced on top with plain icing (not cream cheese). Cake tin not stipulated.

### **Class 1205 CHOCOLATE CAKE**

– Any chocolate cake recipe (Not mud cake). Iced on top with chocolate icing. 20cm round cake tin is recommended.

### **Class 1206 CINNAMON TEA CAKE - Any recipe**

Cooked in a 20cm (8”) round tin

### **Class 1207 RAINBOW SWIRL / TIE DYE CAKE**

– First \$20, Second \$10

### **Class 1211 RICH FRUIT CAKE**

- First \$40, Second \$20

**This is a special class that has been selected by the South West Sub Chamber.**

**The winner of this class in Roma will then be required to enter again Finals. The winner of the Regional Final will then be required to enter the State Final Judging at the Brisbane Exhibition in August.**

Guidelines for Rich Fruit Cake – A set recipe is not provided – exhibitors are permitted to use their own tried and proven recipe in accordance with the Qld Ag Show rules.

Roma Local Show – A 250-gram (1/2 lb) cake mixture with approximately 1.5kg of dried fruit

– This is a colourful cake to add a bit of fun to our schedule.

Five colours are to be used. The idea is to use a plain cake recipe and divide the mixture into five (5) portions. Colour each portion a different colour. Try to keep each colour of a similar brightness. Spoon the five coloured mixtures alternately into your cake tin to make a multi coloured effect, swirl lightly if you wish. Ice on top with one of the colours used in your cake.

Cake tin is not stipulated but we recommend a round or square tin. The cake will be judged on quality, flavour and the combination of colours.

Have fun!!!

### **Class 1208 PATTY CAKES**

– A plate of four (4) patty cakes with plain icing only.

### **Class 1209 DATE LOAF**

– Any date loaf recipe, cooked in a loaf/bar tin.

### **Class 1210 GINGERBREAD**

– Any gingerbread recipe baked in a square or loaf/bar tin.



**Queensland**

**at the Regional**

using – currants, sultanas, and raisins, mixed peel with cherries and nuts optional. Cake to be baked in a 20cm (8”) tin.

Regional Show & Royal Show – A 500gram (1 lb) cake mixture with approximately 2.25kg of dried fruit (as above). Cake to be baked in a 25.5cm

### **Class 1212 BOILED FRUIT CAKE**

– Any boiled fruit cake recipe (not iced) cooked in a round or square tin (20cm or 8” tin is a good size).

### **Class 1213 PUMPKIN FRUIT CAKE**

– Any pumpkin fruit cake recipe (not iced) cooked in a round or square tin (20cm or 8” tin is a good size).

## ***PUDDING***

**Class 1214 STEAMED FRUIT PUDDING** - Any recipe

## ***BISCUITS***

**Class 1215 JAM DROPS** - Plate of four (4) Jam Drop biscuits

**Class 1216 ANZAC BISCUITS** - Plate of four (4)

Anzac biscuits, biscuit size is 5cm diameter and crisp.

**Class 1217 ANZAC BISCUITS SPECIAL CLASS AS SET BY QAS NEXT GEN**

[Full rules and recipe are available to download on the Documents and Downloads section of Showday Online.](#)

[Next Gen Committee.](#)

[This competition is open for those aged between 18 and 40 years old as of 1st May in the year of competition.](#)



### **RECIPE AND PRESENTATION:**

- 6 Biscuits are to be presented for judging
- Biscuit size to be 5.7 cm in diameter
- The below ingredients must be used

Butter

Plain flour

Bicarb Soda

Rolled Oats

Caster Sugar

Golden Syrup

Desiccated Coconut

The winner of this class in Roma will then be required to enter again at the Regional Finals. The winner of the Regional Final will then be required to enter the State Final Judging at the Brisbane Exhibition in August.

The competition will be run similar to the Dark Rich Fruit Cake competition. Winners at the local show will be invited to the Sub Chamber finals and that winner will be invited to compete in the State Finals. Further information will be handed to the winner to proceed to Sub Chamber finals.

The competition will call for a plate of 6 ANZAC biscuits to be presented and within the set rules.

### **Class 1218 ICED BISCUITS**

– Any variety iced biscuit either iced on top or joined together with icing. Plate of four (4).

## ***SLICES / LAMINGTONS***

### **Class 1219 PLAIN SLICE**

– Any plain slice of your choice (no fruit) with icing. Four (4) uniform pieces on a plate, with all sides cut (no edge pieces). Measuring approx. 5cm x 5cm.

### **Class 1220 FRUIT SLICE**

– Any slice using fruit, icing optional. Four (4) uniform pieces on a plate, with all sides cut (no edge pieces). Measuring approx.. 5cm x 5cm.

### **Class 1221 LAMINGTONS**

– Plate of four (4), coated in chocolate icing and tossed in coconut. Measuring approx. 5cm x 5cm.

## ***SCONES/PIKELETS***

### **Class 1222 PLAIN SCONES**

– A plate of four (4) plain scones of uniform size.

### **Class 1223 PUMPKIN SCONES**

– A plate of four (4) pumpkin scones of uniform size.

### **Class 1224 FRUIT SCONES**

– A plate of four (4) scones using any fruit (eg. Dates, Sultanas etc.) of uniform size.

### **Class 1225 PIKELETS**

– A plate of four (4) pikelets of uniform size

## ***BREAD/DAMPER***

### **Class 1226 BREAD**

– Any white or grain loaf. Bread machine or Thermomix is accepted.

### **Class 1227 DAMPER**

– Use a traditional recipe with flour, salt, water & butter.

## ***MENS SECTION***

### **Class 1228 BOILED FRUIT CAKE**

- First \$20, Second \$10

– Any boiled fruit cake recipe (not iced) cooked in a round or square tin (20cm or 8" is a good size).

### **Class 1229 ANY OTHER CAKE**

Any other cake, not iced.

### **Class 1230 ANZAC BISCUITS**

– Plate of four (4) Anzac Biscuits

### **Class 1231 ANY OTHER BISCUITS / SLICE**

Plate of 4 biscuits of the same variety, or 4 slices of the same variety.

### **Class 1232 PIKELETS**

– A plate of four (4) pikelets of uniform size.

## ***CONFECTIONERY***

### **Class 1233 MARSHMALLOWS**

– A plate of four (4) uniform pieces, approx. 3cm x 3cm.

### **Class 1234 FUDGE**

– Any variety. A plate of four (4) uniform pieces, approx. 3cm x 3cm

### **Class 1235 SNACK BALLS**

– Any variety of snack balls (eg. Rum balls, Apricot balls or health balls). A plate of four uniform sized balls. Please state the variety on your entry form.

## ***PRESERVES***

IN CLASSES 34 TO 39 – More than one entry is allowed providing it is of a different variety

### **Class 1236 LEMON BUTTER**

– One jar (only) of lemon butter.

### **Class 1237 DRIED FRUIT JAM**

– One jar of jam using any variety of dried fruit.

### **Class 1238 JAM, ANY OTHER VARIETY**

– One jar of jam of any other variety (using fresh produce).

### **Class 1239 MARMALADE**

– One jar of Marmalade, any variety.

### **Class 1240 MUSTARD PICKLES**

– One jar of mustard pickles.

### **Class 1241 CHUTNEY**

– One jar of chutney, any variety.

### **Class 1242 RELISH**

– One jar of relish any variety.

## ***JUNIOR SECTION***

### **JUNIOR 6 YEARS AND UNDER**

### **Class 1243 DECORATED ARROWROOT BISCUITS**

S – A plate of four (4) arrowroot biscuits decorated with coloured icing, sprinkles or any edible decoration.

### **Class 1244 EDIBLE NECKLACE**

– A necklace made with edible DRY food products. Use products that can be threaded onto thread to make a necklace eg. pasta, lollies, pretzels, cheezels, dried fruit, nutri grain, fruit loops etc.

**Class 1245 PATTY CAKES**

– A plate of four (4) iced patty cakes with sprinkles.

**JUNIOR 7 YEARS TO 12 YEARS**

**Class 1246 EDIBLE NECKLACE**

– A necklace made with edible DRY food products. Use products that can be threaded onto thread to make a necklace e.g. pasta, lollies, pretzels, cheezels, dried fruit, nutri grain, fruit loops etc.

**Class 1247 PIKELETS**

– A plate of four (4) pikelets (as uniform in size as possible).

**Class 1248 PATTY CAKES**

– A plate of four (4) iced patty cakes (sprinkles optional).

**Class 1249 BISCUITS**

– Any variety of biscuit. A plate of four (4). As uniform in size as possible.

**Class 1250 SNACK BALLS**

– A plate of four (4) snack balls of any variety eg. Apricot, date, peanut butter etc. (Not Rum Balls).

**JUNIORS 12 YEARS TO 16 YEARS**

**Class 1251 ANY CAKE**

– Any other cake not already mentioned including Gluten Free, using a tin of choice. Please specify what type of cake it is with entry.

**Class 1252 ANY SLICE**

– Any slice iced or uniced. A plate of four (4) pieces as uniform in size as possible. We recommend a size of approx. 5cm x 5cm with four cut edges (no side pieces).

**Class 1253 ANY MUFFINS**

– A plate of four (4) muffins – any variety, sweet or savoury. Please state what variety on entry.

**Class 1254 PIKELETS**

– A plate of four (4) pikelets of uniform size

**Class 1255 BISCUITS**

– Any variety. A plate of four (4) biscuits of uniform size.

**Class 1256 SNACK BALLS**

– A plate of four (4) snack balls of any variety (of uniform size) e.g. Apricot, Date, Peanut Butter etc.

## **SECTION FOR PEOPLE LIVING WITH A DISABILITY**

**Class 1257 DECORATED ARROWROOT BISCUITS**

– A plate of four (4) decorated with coloured icing, sprinkles or any edible decoration.

**Class 1258 EDIBLE NECKLACE**

– A necklace made with edible DRY food products. Use products that can be threaded onto a thread to make a necklace eg. lollies, pretzels, cheezels, dried fruit, nutri grain, fruit loops etc.

**Class 1259 PATTY CAKES**

– A plate of four (4) iced patty cakes with sprinkles.

## **DECORATED ICED CAKES**

### **RULES & GUIDELINES**

#### **PLEASE READ THE FOLLOWING CAREFULLY:**

A completed entry form must accompany entries. Please state collection details.

1. Entries can be dropped off at the main Pavilion on Wednesday 6th May between 5pm and 7pm OR on Thursday morning 7th May from 8am to 11.30am.
2. All exhibits must be in the main Pavilion no later than 11.30am on Thursday 7th May 2026.
3. No exhibits will be accepted after judging commences.
4. Judging will commence at 12 noon on Thursday 7th May 2026.
5. One entry only, per person, per class.
6. The base presentation board in each class must measure as stated.
7. Fabric used as an exhibit enhancer may be moved and removed by stewards to allow judging of exhibit.
8. Boards may be covered as a matter of choice.
9. All exhibits must be able to be lifted by one person.
10. No previous entry or parts thereof may be used.
11. Reasonable use of wire, stamens, ribbon, braids, thread, tulle, gelatin, piping gel and

unbreakable gel to support traditional sugar-based icing techniques is permitted.

12. Minimal use of dried vegetable matter, e.g. polenta and semolina, may be used.

13. Posy picks are permissible.

14. No pins are allowed to hold the ribbons etc.

15. Minimal use of artificial paper, fabric leaves and flowers to be used.

16. Sprays must be attached to exhibit.

17. Wooden or Perspex skewers and support boards may be used in all sections.

18. Dummy cakes are allowed in all classes except the Novelty Cake classes.

19. Design must be achievable in cake.

20. All entries must be the handiwork of the exhibitor only.

21. PLEASE NOTE: Decorated Iced Cakes (not dummy cakes) can be sold at the show.

Exhibitors must indicate on their entry form if they would like to put a 'for sale' sign on their cakes. Cakes will have to stay on display until Saturday night.

For further information, please contact the chief steward.

#### HOME BAKER SECTION - open

This section is perfect for anyone who loves baking special cakes at home for family and friends. Unleash the amateur baker in you and join us for a fun, creative baking experience. THESE CAKES WILL BE JUDGED ON DECORATION ONLY

#### **Class 1260 SPECIAL OCCASION CAKE - BUTTERCREAM and OR MARZIPAN**

Up to two tiers, iced with buttercream icing. There are no restrictions for decorations or height (but keep in mind the cakes shall be presented for viewing in cabinets in the cookery section). maximum board size 55cm

#### **Class 1261 NOVELTY CAKE - BUTTERCREAM and or MARZIPAN**

- A novelty cake iced with buttercream icing. It can be of any shape or size, with a maximum board size of 55cm.

#### **Class 1262 CUPCAKES - BUTTERCREAM**

- A selection of four (4) cupcakes iced with buttercream icing and decorated with edible decorations including sprinkles, pearls and sequins.

#### JUNIOR SECTION

This section welcomes our talented junior bakers, aged 18 and under, who have a passion for cake making! It's

a fantastic opportunity for young cake enthusiasts to show off their creativity.

THESE CAKES WILL BE JUDGED ON DECORATION ONLY

#### **Class 1263 SPECIAL OCCASION CAKE - BUTTERCREAM and or MARZIPAN**

- Up to two tiers, iced with buttercream icing.

There are no restrictions for decorations or height (but keep in mind the cakes shall be presented for viewing in cabinets in the cookery section). Maximum Board size 55cm

#### **Class 1264 NOVELTY CAKE - BUTTERCREAM**

- A novelty cake iced with buttercream icing. It can be of any shape or size, with a maximum board size of 55cm.

#### **Class 1265 CUPCAKES - BUTTERCREAM**

- A selection of four (4) cupcakes iced with buttercream icing and decorated with edible decorations including sprinkles, pearls and sequins.

Grand Champion Exhibit Cooking

Champion Open Cooking

Champion Junior Cooking

Champion Open Decorated Iced Cakes S

Champion Junior Decorated Iced Cakes S

Champion Preserve

Most Points in the Open Cooking Section

Most Points in the Decorated

Cakes

Most Points in the Junior Cookery Section

Most Points in the Junior Decorated Cakes

Most Points People living with a disability

Cooking

Most Points (Confectionary & Preserves)

# **SECTION 14 - HORTICULTURE**

**CHIEF STEWARD:** Helen Dillon and Cait Roberts

**ASSISTANT STEWARDS:** Jono & Louise Millroy, Margaret Hetherington, Suzanne Ramage

**JUNIOR STEWARDS:** Tazhra Howlett, Hannah Dillon, Grace Roberts

ENTRIES accepted **THURSDAY 7th MAY 2026 7.30am - 10AM –**

**NO LATE ENTRIES AFTER 10AM WILL BE ACCEPTED**

**Adults Entry Fee: \$1.00 per entry**

**Junior Entry Fee: \$1.00 per entry**

**Special Section: Free**

**Entry forms must be completed by exhibitor.**

Entries are to be delivered to the Farm N Garden – Horticulture pavilion beside the Fashion Parade Building. (Next to the Poultry Pavillion)

All vehicles delivering exhibits must be cleared from this area by 10.00am

## **RIBBONS, TROPHIES AND PRIZE MONEY:**

(Unless otherwise specified)

First: \$8.00

Second: \$4.00

Champion Ribbon where specified

Prize for each section winner

Memorial Perpetual Trophy for Champion Rose

Grand Champion Sash for Overall winner (Based on most Points overall)

Alison Murphy Shield for Show Champion.

OzziKleen Sustainable Gardening Award – trophy & merchandise.

## **RULES & REGULATIONS:**

1. Exhibits received after 10.00am, Thursday 7th May 2026, will not be accepted.
2. All entries in Fresh Flowers and Pot Plants must be grown by the exhibitor.
3. The Pavilion will close at 6.00 pm on Saturday 9th May 2026 and entries may be collected after 6pm Saturday or on Sunday between 9am – 10am
4. Please read the sections carefully – all exhibitors must decide on entries best fit. Only the judge reserves the right to move the entry to a more suitable category.
5. Cut flower exhibits will not be accepted if they exceed 60cm.
6. Six entries constitute a class in each subsection. If this number is not reached, the subsection will not be awarded a prize.
7. All cut flower exhibits will be displayed in a single 330ml bottle supplied by the section.
8. If you know the name of your entry, please include on your entry form.
9. All prize money is to be collected from the Main office between 4pm and 6pm on Saturday 9th May. After this time, any unclaimed prize money will be dealt with in accordance with legislative requirements. At all times, it is the sole responsibility of the winner to collect his or her prize.

## **HELPFUL HINTS WHEN ENTERING THE HORTICULTURE SECTION**

### **ROSES**

- When entering roses, the exhibit must have a long, straight, strong stem with a few leaves left.
- Clean or pull off any marked petals from the bottom of the flower, making sure there is no tell-tale petal left.
- Always remove any old or marked leaves off your exhibit.
- Pick roses in the cool.
- Dip the end of the stem in boiling water for 30 seconds, then put into cold, deep water.

- When submitting from “bud to bloom”, the bud should show a little colour with the others a different stage through to full blown rose.

#### **FLORAL ART SECTION**

- In the floral art section, entrants should cover all their foam, wire and pin holders with leaves or something similar so people cannot see them when they view the design.
- If an entrant can only use a certain number of flowers, they should include nuts, foliage or ribbon to fill the effect.
- Driftwood: wood that has been weathered by natural elements (e.g. air, earth, fire or wind).
- Other Timber: may be timber that is cut, turned, polished or varnished.
- Remember to soak the oasis in water before arranging live flowers and then add more water when arrangement is complete. Flowers will last much longer this way.
- Be daring – try something different with your arranging.

#### **POT PLANT SECTION**

- Ensure dead leaves are removed.
- Keep turning your pot each week so your plant is even.
- Your pot must be filled with potting mix and the pot must be clean.
- Spray your plant with foliage shine – this enhances your presentation.

#### **Bougainvillea**

- Leave Leaves and thorns for stewards to remove if required
- Seal cut with flame straight after cutting exhibit to prolong display.

### ***FRESH FLOWERS***

#### **Roses**

Overall Points for Classes 1 – 9 Roses – Prize:  
Champion Sash

**Class 1401** One Rose - Red

**Class 1402** One Rose - White

**Class 1403** One Rose - Orange

**Class 1404** One Rose - Any other colour

**Class 1405** One Rose - Full Blown any colour

**Class 1406** One Rose - Bud to Bloom - 3 to 4 All on one stem, bud must show colour

**Class 1407** Container of Assorted Roses - at least three colours, any variety (Max 6 roses)

**Class 1408** Container of Old - fashioned Roses

**Class 1409** One rose bud - must show colour

– petals not unfurled, must have leaf attached.

Perpetual Trophy - Overall Rose

Memorial Trophy for Champion Rose

#### **Geraniums**

**Class 1410** One Cut Zonal Geranium, leaves attached - any colour

#### **Chrysanthemums**

Exhibits must be at least 10cm long

**Class 1411** One Stem Chrysanthemum - Bloom - any colour

**Class 1412** Container of Chrysanthemums - at least three colours

#### **Bougainvillea**

Exhibits to be no longer than 60cm

**Class 1413** One Cut Bougainvillea - White

**Class 1414** One Cut Bougainvillea - Purple

**Class 1415** One Cut Bougainvillea - Red

**Class 1416** One Cut Bougainvillea - Orange

**Class 1417** One Cut Bougainvillea - Any other colour

**Class 1418** One Cut Bougainvillea - Bi-colour (not a spot)

A part of the plant which differs from the rest of the same plant in either flower or foliage, as opposed to a true variation. E.g.: A pink and white flower on a solely white Hibiscus or solid leaf colour on a variegated plant

**Class 1419** One Cut Bougainvillea - Pink  
Champion Bougainvillea  
Champion Bougainvillea of the show

#### ***NATIVE SECTION***

**Class 1420** One Cut Eremophila – any Colour flower

**Class 1421** One cut – Grevillea

**Class 1422** One cut – Bottlebrush

Other Cut Flower

**Class 1423** One cut Gerbera - any colour

**Class 1424** One Cut - Any other Flowering  
Shrub, Tree, or Vine

(not necessarily a single flower)

**Class 1425** One Cut Flower - Not  
previously mentioned

### ***FLOWER ARRANGING***

**Class 1427** A Table Arrangement using  
fresh flowers and fillers

**Class 1428** An Arrangement using any  
Horticulture Material  
(fresh, dried or artificial)

### ***HORTICULTURAL ART DIVISION***

A sculpture using seed pods.

**Class 1429** Made by a child up to and  
including 8 years of age

**Class 1430** Made by a child 9 & Over

### ***POT PLANTS***

Overall Points for Classes 31 – 34 Potted Plants –  
Prize: Champion Sash

**Class 1431** One Pot Plant - any variety up  
to 400mm

**Class 1432** One Cactus or Succulent up to  
250mm

**Class 1433** One container up to 250mm of  
mixed succulents

- minimum 3 varieties

OZZIKLEEN SUSTAINABLE GARDENING AWARD

This Award will be taken from entries in classes  
913-922 and 935-933.

Trophy & Merchandise.

Champion Sash - Overall Points f

GRAND CHAMPION HORTICULTURAL EXHIBIT

**GRAND CHAMPION HORTICULTURAL EXHIBIT**

**SASH And**

**THE ALISON MURPHY MEMORIAL SHIELD**

For the person gaining the most number of points  
in the Horticulture Section.

This Shield has been kindly donated by the family  
OF THE LATE MRS ALISON MURPHY.

For most number of points in the Horticulture

## **SECTION 15 - Farm & Garden**

**CHIEF STEWARD:** Kate Robinsen phone: 0427 225 816 Email: gavco\_ptyltd@westnet.com.au

**ASSISTANT STEWARDS:** Marlene Rennick, Alma Ferguson, Geoffrey Murray.

All entrants in Young Judges Competition are invited to participate as stewards.

#### **ENTRIES:**

ENTRIES SUBMISSION TIMES: **WEDNESDAY 6th May 3PM - 6PM**

**THURSDAY 7th MAY 7AM – 9AM**

ENTRIES CLOSE **THURSDAY 7th MAY, 2026 AT 9.00AM –**

**NO LATE ENTRIES WILL BE ACCEPTED**

**Other times by arrangement with Chief Steward only.**

Entries can be done via Showday at romashow.com (preferred) or entry form delivered with your produce.

Entry Fee: \$2.00 (gst incl) per entry

Entries to be delivered to the Farm & Garden (Wool) pavilion.

All vehicles delivering exhibits must be cleared from this area by 9.30 am Thursday 7th May 2026.

#### **RIBBONS, TROPIES AND PRIZE MONEY:**

First: \$8.00 (gst incl)

Second: \$5.00 (gst incl)

(Unless otherwise specified)

## RULES & REGULATIONS:

In addition to the Roma Show Society Rules & Regulations listed at the front of the main schedule, the following will apply to this section.

1. Exhibits received after 9.00 am, Thursday 7th May 2026, will not be accepted.
2. All entries must be grown by the exhibitor.
3. All classes must be harvested within 12 months of the Show date or otherwise stated.
4. No distinguishing marks to be left on any exhibit.
5. Points are allocated for presentation of entries.
6. Any competitors selling their produce are obliged to donate 20% commission to the Roma Show Society Inc.
7. The Pavilion closes to the public at 5pm on Saturday 9th May 2026 and entries to be collected between 5pm and 6pm Saturday and on Sunday 10th May between 8am and 10am.
8. No pickled grain to be entered.
9. All prize money is to be collected from the main office on Saturday 9th May 2026 between 4 and 6pm. After this time, all unclaimed prize money will be donated back to the show, it the responsibility of the winner to collect his or her prize money.
10. Competitors Declaration - All competitors and exhibitors have read and understand the Rules and Regulations and agree to be bound in all respects by these Rules and Regulations. Competitors and exhibitors also consent and agree that the Roma Show Society has the right to take or use photographs of him or her (and/or your property) and use the photos in any and all marketing and media worldwide, including online, now and in the future. All entrants compete at their own risk. No claim in any form shall be made by the entrant, their families, friends and/or representative against the Roma Show Society or person/s associated with the holding of the competition/exhibit.

**\*\*\*\*PLEASE NOTE: Schedules are subject to change at any time and without notice\*\*\*\***

## DIVISION A

Pumpkins

**Class 1501** One Pumpkin - Qld Blue

**Class 1502** One Pumpkin - Jarrahdale

**Class 1503** One Pumpkin - Butternut

**Class 1504** One Pumpkin - Kent (Jap)

**Class 1505** One Pumpkin - any other variety

CHAMPION EDIBLE PUMPKIN FROM CLASSES 1-5

**Class 1506** Collection of Pumpkins - each a distinct variety

**Class 1507** Biggest Pumpkin - any variety - judged on size

Cucurbits

**Class 1508** One Marrow or Zucchini

**Class 1509** One Squash

**Class 1510** One Cucumber

**Class 1511** Collection of Cucurbits from Class 8, 9 and or 10

Vegetables

**Class 1512** Two Beetroot - leaves attached.

**Class 1513** Two Carrots - tops attached.

**Class 1514** Two Potatoes/Sweet Potatoes

**Class 1515** Two Allium

- i.e. Onion x 2, Garlic x 2 etc., Chives, Leek, Shallot, Scallion (Spring Onion)

**Class 1516** Head of Brassica - i.e. Cabbage, Broccoli, Cauliflower

**Class 1517** Head of Lettuce  
(Suggestion Displayed in Glass jar with water)

**Class 1518** Two Corn Cobs

**Class 1519** Plate of any variety of Bean

**Class 1520** Two Capsicum or Two Chili

**Class 1521** Any other Vegetable not specified.

**Class 1522** Collection of Vegetables - no less than three varieties

**Class 1523** Silver beet, Spinach and Chard

**Class 1524** The One That Got Away'  
Vegetable

- not judged on taste but on size

CHAMPION EDIBLE VEGETABLE  
FROM CLASSES 8-11 and 12-25

**Class 1525** Basket of soup vegetables - minimum of 4 different varieties

Miscellaneous - Herbs & Mushroom

**Class 1526** One Single herb sprig

**Class 1527** Collection of Herbs - entries to have at least Three herbs and list provide

**Class 1528** One Herb grown in pot (Potted herb)

**Class 1529** One edible Mushroom any variety

CHAMPION MISCELLANEOUS - HERBS & MUSHROOM  
CLASSES 26-29

## DIVISION B

Citrus Fruit

**Class 1530** Two Grapefruit

**Class 1531** Two Mandarins

**Class 1532** Two Oranges

**Class 1533** Two Lemons

**Class 1534** Two Citrus - any other variety  
Other Produce

**Class 1535** Three Tomatoes

**Class 1536** One Water Melon

**Class 1537** One Rock Melon

**Class 1538** Plate of Rosellas

**Class 1539** Two of any other one fruit not specified.

**Class 1540** Collection of Fruit - no less than three varieties

CHAMPION FRUIT  
FROM CLASSES 30-40

Eggs

- to be displayed in half cardboard carton with egg point down

**Class 1541** Six Plain Brown Hen Eggs

**Class 1542** Six Plain White Hen Eggs

**Class 1543** Six any other colour Hen Eggs

**Class 1544** Six any colour any other Bird

Egg

CHAMPION EGGS  
FROM CLASSES 41-44

## DIVISION C

Grains - Summer

Displayed in Clear Bags

**Class 1545** Sorghum - 4kgs

**Class 1546** Mung Beans - 4kgs

Grains - Winter

Displayed in Clear Bags

**Class 1547** Wheat - 4kgs

**Class 1548** Barley - 4kgs

**Class 1549** Chickpeas - 4kg

**Class 1550** Oats - 4kg

CHAMPION GRAIN  
FROM CLASSES 45-50

Hay

**Class 1551** Lucerne - Entry size -1 Biscuit

**Class 1552** Oats - Entry Size - 1 Biscuit

**Class 1553** Barley - Entry Size - 1 Biscuit

**Class 1554** Sorghum - Entry Size - 1 Biscuit  
Chaff

**Class 1555** Lucerne - Entry Size - 1 Biscuit

**Class 1556** Oats - Entry Size - 1 Biscuit

**Class 1557** Barley - Entry Size - 1 Biscuit

**Class 1558** Sorghum - Entry Size - 1 Biscuit  
CHAMP

CHAMPION HAY & CHAFF  
CLASSES 51-58

Prize Voucher Donated by

GRAND CHAMPION EXHIBITOR - MOST POINTS IN  
DIVISION A, B & C

Trophies/ vouchers donated by Farmers Wife  
Coffee and Roma Computer Centre  
Overall Winner by Roma Computer Centre

## JUNIOR DIVISION

For children aged 14 years & under

Fruit & Vegetables

**Class 1559** One Pumpkin any variety

**Class 1560** Any One Squash, Marrow or  
Zucchini

**Class 1561** Any other Two Vegetables - i.e.  
Carrot & Bean or Potato & Parsnip

**Class 1562** Any Two Fruit - i.e. Orange &  
Rock Melon or Tomato & Orange

**Class 1563** Display of Fruit/Vegetables

**Class 1564** Collection of herbs - three or  
more

**Class 1565** Six Hen eggs in a half  
cardboard carton with egg point down.

**Class 1566** Novelty - Best Dressed Fruit or  
Vegetable (For example - Mr Potato Head)

**Class 1567** Best School Exhibit

– Exhibits will be judged on variety of produce, quality of exhibits and presentation of display  
CHAMPION JUNIOR EXHIBIT Farm & Garden  
**FARM AND GARDEN JUNIOR JUDGES**  
Junior Judges are invited to act as stewards and will be judged on their ability to assess and judge a selected class. Entrants will provide reasons for their choice.

Trophy and Prizemoney donated by  
**Class 1568** Junior Farm and Garden Judge under 13 years

**Class 1569** Junior Farm and Garden Judge 13 years and under 18 years



**2026  
ROMA  
SHOW**

**MAY  
8TH  
9TH**

## **SCARECROW COMPETITION**

Junior - 14 Yrs & Under

Adult - Open

Business - Any local business - Open

\$2.00 per entry. Entry details online at [romashow.com](http://romashow.com) - Showday. Entries close 7/5/26 at 9am.

Scarecrows:

Height no more than 1.5mtrs

Width no more than 1mtr

Scarecrow to be self-supporting

### **SCARECROWS**

Height to be no more than 1.5metres

Width to be no more than 1 metre

Scarecrow is to be **self-supporting**.

Entries may be individual, school class, club or group effort.

First Prize - \$15.00 (gst incl);

Second Prize - \$10.00 (gst incl).

**Class 1570** Junior Scarecrow 14 Yrs and under any category e.g. happy, scary

**Class 1571** Adult Scarecrow - Open

Category

**Class 1572** Business Category - Any local business Open

# SECTION 16 - PHOTOGRAPHY

**ENTRIES CLOSE:** Tuesday, 5th May 2026 at 10am

**Entry forms must be submitted for each exhibitor to reflect Section, Class and Photo Title:**

## **ENTRY FEES:**

Junior Section. \$3 entry fee per entry

Open Section – Colour \$4 entry fee per entry

Open Section – Monochrome / Duo-tone \$4 entry fee per entry

## **SUBMISSION OF ENTRIES:**

*If the following dates / times do not suit, please make alternative arrangements with the Roma show Secretary.*

▪ Roma Showgrounds – Bassett Park  
Secretary's Office, Monday 4th May 2026 8am-2pm

▪ Roma Showgrounds – Bassett Park  
Main Pavilion, Monday 4th May 2026 2pm-4pm and Tuesday 5th May 2026 8am to 10am

## **PRIZE MONEY:**

### **Junior Section**

- First Prize \$20.00
- Second Prize \$10.00
- Third Prize \$5.00

### **Open Section – Colour + Monochrome / Duo-tone Sections**

- First Prize \$30.00
- Second Prize \$20.00
- Third Prize \$10.00

## **RULES & REGULATIONS:**

In addition to the Roma Show Society Rules & Regulations listed at the front of the main schedule, the following will apply to this section.

1. All entries must have been photographed by the exhibitor.
2. Any person may enter the Open section.
3. The Steward or Judge may re-categorise an entry if it is necessary.
4. A maximum of five entries per exhibitor in each class.
5. **All entries are to be clearly marked with name, address, phone number and class on the back of each entry**
6. Please include any additional information on the back of the entry to include mode of photography such as 'camera & type', 'type of lens', 'phone', 'drone'.
7. **Entries do not need to be mounted on card this year, they will be displayed with velcro dots** – all care will be taken but the Roma Show Society does not take responsibility for any damages
8. **All images must be a minimum of 6x4 (inches) and a maximum of 5x7 inches** for all classes.
9. No titles/captions under photos please
10. No same image may be entered into more than one class.
11. An entry form must be completed by each entrant.
12. Instructions for return, plus postage if needed, must be included with entries.
13. Entries from previous Roma Show Photography competitions are excluded.
14. If the judge decides that none of the entries are worthy, then no prize will be awarded.
15. The judge's decision on place awards is final.
16. All entries can be collected from the pavilion on Show Day Saturday 9th May from 5:00 pm to 6:00 pm or Sunday 10th May from 09:00 – 11:00 am. If unable to collect, suitable arrangements must be made with the chief steward.

17. All prize money is to be collected from the Main office between 4pm and 6pm on Saturday 9th May. After this time, any unclaimed prize money will be dealt with in accordance with legislative requirements. At all times, it is the sole responsibility of the winner to collect his or her prize.

18. Competitors Declaration - All competitors and exhibitors have read and understand the Rules and Regulations and agree to be bound in all respects by these Rules and Regulations. Competitors and exhibitors also consent and agree that the Roma Show Society has the right to take or use photographs of him or her (and/or your property) and use the photos in any and all marketing and media worldwide, including online, now and in the future. All entrants compete at their own risk. No claim in any form shall be made by the entrant, their families, friends and/or representative against the Roma Show Society or person/s associated with the holding of the competition/exhibit.

19. The champion photo in both Junior and Open classes will be enlarged by the Roma Show Society for display during the show.

**\*\*\*\*\* PLEASE NOTE: Schedules are subject to change at any time and without notice \*\*\*\*\***

## **JUNIOR SECTION - UNDER 15 YEARS**

Min size photo: 6"x4"  
Max size photo:5"x7"

**Class 1601** Junior - People &/or Animals

May include individuals or groups.

**Class 1602** Junior - Holiday / Travel

**Class 1603** Junior - Australiana

**Class 1604** Junior - A Slice of Life

**Class 1605** Junior - Any Other Subject

Champion Junior Photography - U15 - \$50

Champion is based on combined points awarded for photos in all categories. An article will be placed in 'Maranoa Today' & showcased in Roma Show Society Gallery. Prints will be displayed for 3 months in a public setting / gallery.

Print will be displayed at 2026 Roma Show

## **OPEN SECTION - COLOUR**

Min size photo: 6"x4"  
Max size photo:5"x7"

**Class 1606** People & Animals

People interacting with an animal

**Class 1607** Head Shot / Portrait

**Class 1608** Holiday / Travel

**Class 1609** Action Shot

**Class 1610** Street Photography

**Class 1611** Landscape

**Class 1612** Australiana

**Class 1613** Mystery

## **OPEN SECTION - MONOCHROME / DUO-TONE**

Min size photo: 6"x4"

Max size photo:5"x7"

**Class 1614** People & Animals

People interacting with an animal/s

**Class 1615** Head Shot / Portrait

**Class 1616** Holiday / Travel

**Class 1617** Action Shot

**Class 1618** Street Photography

**Class 1619** Landscape

**Class 1620** Australiana

**Class 1621** Mystery

Photography Grand Champion - \$100

Grand Champion is selected from all class winners. An article will be placed in 'Maranoa Today' & showcased in Roma Show Society Gallery. Prints will be displayed for 3 months in a public setting / gallery.

Print will be displayed at 2026 Roma Show

Photography - Joint Show Award - \$50

Selected from entries that have been submitted in both the Wallumbilla Show and Roma Show.

Champion Open Print - Colour - \$50

Champion is based on combined points awarded for photos in all Open Colour categories. An article will be placed in 'Maranoa Today' & showcased in Roma Show Society Gallery. Prints will be displayed for 3 months in a public setting / gallery.

Print will be displayed at 2026 Roma Show

Champion Open Print - Monochrome / Duo-tone - \$50

Champion is based on combined points awarded for photos in all Open Monochrome categories. An article will be placed in 'Maranoa Today' & showcased in Roma Show Society Gallery. Prints

will be displayed for 3 months in a public setting / gallery. Print will be displayed at 2026 Roma Show People's Choice Vote - \$50

## \*\*\*\*\*NEW IN 2026\*\*\*\*\*

### TRACC - JUST A SOUTH WEST FARMER

**TRACC Sponsorship of \$1000.00 per section.  
Prize Money 1st \$500, 2nd \$300, 3rd \$200**

#### Classes 1622 & 1623

#### TRACC – Just a South West Farmer Photography Showcase 2026

*Celebrating Rural Life & Promoting Mental Wellbeing*

The Just a South West Farmer Photography Showcase invites youth and adult entrants to capture authentic moments that reflect the lives and spirit of rural South West Queensland.

Photographs will be judged at participating 2026 agricultural shows, with **People's Choice winners** progressing to regional judging and potential inclusion in the **2027 TRACC Mental Health Awareness Calendar**.

The regional winner will be announced during **Mental Health Month (October 2026)**. *(No additional prize money applies at regional level.)*

#### Sections

- Adult (18+) **Class 1622**
- Youth (Under 18) **Class 1623**

#### Prize Money (per class)

- 1st: \$500
  - 2nd: \$300
  - 3rd: \$200
- (Supported by \$1,000 TRACC sponsorship per section)*

#### Theme

#### Just a South West Farmer

Capture:

- Daily life on farms and stations
- Generations in agriculture
- **The beauty and challenges of rural living**

#### Judging

- **People's Choice (per show):** Public voting during your local ag show. Roma show winners to be announced to be announced Saturday 9th of May at approximately 6pm.

#### Entry Conditions

- Open to ALL residents within the South West Hospital and Health Service district
- Open to amateur and professional photographers
- Maximum **3 entries per person**

- Entries can be submitted to one participating ag show only
- Images must be original (taken on or after 1 January 2024)
- Printed copy to be provide for display (max A4, black & white accepted)
- No names, branding, or watermarks on images
- Permission required for identifiable people

Selected entrants may be asked to provide a **high-resolution digital image** (300 DPI, 2400 × 3300 px) to the TRACC team for calendar use.

### Additional Information

- Entry fees and submission process are managed by your local show committee
- Prizes distributed by the show society
- By entering, participants consent to use of images for TRACC promotional and educational purposes

TRACC clinicians will attend participating shows to facilitate the People’s Choice voting.

### Class 1622 ADULT - 18+ Judging & Awards

- People’s Choice Award: Voted by the public. Visitors to the Roma show vote for their favourite entry in the Adult category.
- 1st \$500, 2nd \$300, 3rd \$200

### Class 1623 JUNIOR - UNDER 18 Judging & Awards

- People’s Choice Award : Voted by the public. Visitors to the Roma show vote for their favourite entry in the Youth category.
- 1st \$500, 2nd \$300, 3rd \$200

## **SECTION 17 - HOME BREW**

CHIEF STEWARD: Cameron O'Neil (0429 956 379, cam.j.oneil@gmail.com)

### **ENTRIES:**

ENTRIES CLOSE WEDNESDAY 6th MAY 2026 AT 12.00PM – NO LATE ENTRIES WILL BE ACCEPTED

Call Cameron on 0429 956 379 to arrange drop off.

Adults Entry Fee: \$5.00 (inc gst) per entry (please have correct change if not paid online)

Entry forms must be completed by exhibitor.

Judging will be Wednesday 6th May 2026, winners announced Friday 8th May 2026.

Prizes and entries can be returned by contacting Cameron on 0429 956 379.

### **RULES & REGULATIONS:**

In addition to the Roma Show Society Rules & Regulations listed at the front of the main schedule, the following will apply to this section.

1. Entries must be the product of amateur entrants

2. Home Brew entries will be judged on the following basis:

- Aroma
- Appearance – colour, clarity and head (beer)
- Flavour

3. Submit one bottle per class (Spirit 750ml bottle, Beer 750ml longneck bottle)

4. Jerky entries will be judged on the following basis:

- Flavour
- Appearance
- Eatable

5. Submit one small container of Jerky

6. Worcestershire Sauce entries will be judged on the following basis:

- Appearance
- Flavour

7. Submit one small bottle per entry.

8. All prize money is to be collected from the Main office between 4pm and 6pm on Saturday 9th May. After this time, any unclaimed prize money will be dealt with in accordance with legislative requirements. At all times, it is the sole responsibility of the winner to collect his or her prize.

9. Competitors Declaration - All competitors and exhibitors have read and understand the Rules and Regulations and agree to be bound in all respects by these Rules and Regulations. Competitors and exhibitors also consent and agree that the Roma Show Society has the right to take or use photographs of him or her (and/or your property) and use the photos in any and all marketing and media worldwide, including online, now and in the future. All entrants compete at their own risk. No claim in any form shall be made by the entrant, their families, friends and/or representative against the Roma Show Society or person/s associated with the holding of the competition/exhibit.

**\*\*\*\*\*PLEASE NOTE: Schedules are subject to change at any time and without notice\*\*\*\*\***

### **RIBBONS, TROPHIES, AWARDS AND PRIZE MONEY:**

Amateur Homebrew Champion: Western Queensland Spirits Private tasting (Group of 10 to experience a personal tour, spirit tasting and gourmet tasting plate)

Amateur Homebrew Highly Recommended: \$50 Western Queensland Spirits Voucher

First Place - Homebrew Class (1,2,3): \$100 Western Queensland Spirits Voucher

First Place - Jerky Class: \$100 Western Queensland Spirits Voucher

First Place – Worcestershire Sauce \$100 Western Queensland Spirits Voucher

First Place per class: Place Card

Entries open Monday 23ed February 2026

## **CLASS 1: BEER**

**Class 1701** Pale Ale  
**Class 1702** Lager  
**Class 1703** Stout  
**Class 1704** Dark Ale  
**Class 1705** Wheat Beer

## **CLASS 2: GINGER BEER**

**Class 1706** Alcoholic  
**Class 1707** Non-alcoholic

## **CLASS 3: SPIRIT**

**Class 1708** Rum

**Class 1709** Whiskey  
**Class 1710** Gin  
**Class 1711** Bourbon  
**Class 1712** Liqueur  
**Class 1713** other

## **CLASS 4: JERKY**

**Class 1714** Jerky

## **CLASS 5: WORCESTERSHIRE SAUCE**

**Class 1715** Worcestershire sauce  
Amateur Homebrew Champion

## **SECTION 18 - Primary School Handwriting**

### **ENTRIES:**

ENTRIES CLOSE **Wednesday 6th May 2026 at 4:00pm** – **NO LATE ENTRIES WILL BE ACCEPTED**

Entries must be submitted to:

41 Arthur Street  
Roma 4455

If posting, please write 'Handwriting'

### **RIBBONS, TROPHIES AND PRIZE MONEY:**

First: Years One – Six, \$7.00, Teacher \$10.00  
Second: Years One –Year Six, \$5.00 Teacher \$7.00  
Third: Years One –Year Six, \$3.00 Teacher \$5.00

### **RULES & REGULATIONS:**

In addition to the Roma Show Society Rules & Regulations listed at the front of the main schedule, the following will apply to this section.

1. All entries must be written in the correct Handwriting and on the correct paper. Years Five, Six and Teachers, blue lines only.
2. All children's and teacher's names must be on the back of the piece of handwriting. Students must have the name of the school they attend and their year level.
3. All students in Years One to Six must use a relatively dark pencil so that their handwriting can easily be read at a distance.
4. Teachers may use a pen (blue or black ink)
5. Year Three: entries and exits are a minimum requirement.
6. Years Four, Five and Six require a margin ruled in pencil.
7. Teachers, please select the five best entries from your class for judging.
8. Punctuation and spelling are important, however, ultimately, handwriting will determine First Place.
9. Please list no more than up to three favourite things at the Roma Show. (e.g. eat fairy floss, dodgems, Dinkum Dinosaurs).

10. All prize money is to be collected from the Main office between 4pm and 6pm on Saturday 9th May. After this time, any unclaimed prize money will be dealt with in accordance with legislative requirements. At all times, it is the sole responsibility of the winner to collect his or her prize.

11. Competitors Declaration - All competitors and exhibitors have read and understand the Rules and Regulations and agree to be bound in all respects by these Rules and Regulations. Competitors and exhibitors also consent and agree that the Roma Show Society has the right to take or use photographs of him or her (and/or your property) and use the photos in any and all marketing and media worldwide, including online, now and in the future. All entrants compete at their own risk. No claim in any form shall be made by the entrant, their families, friends and/or representative against the Roma Show Society or person/s associated with the holding of the competition/exhibit.

**\*\*\*\*\*PLEASE NOTE: Schedules are subject to change at any time and without notice\*\*\*\*\***

## **SECTION 18 - Primary School Handwriting**

### **Class 1801 Year One entry**

#### **TEXT TO BE WRITTEN**

*The Roma Show Society is hosting the 139th annual Roma Show for 2025.*

*My favourite thing at the Roma Show is.....*

### **Class 1802 Year Two entry**

#### **TEXT TO BE WRITTEN**

*The Roma Show Society is hosting the 139th annual Roma Show for 2025. The show will be held at Bassett Park on the second weekend of May.*

*My favourite thing at the Roma Show is.....*

### **Class 1803 Year Three & Four entry**

#### **TEXT TO BE WRITTEN**

*The Roma Show Society is hosting the 139th annual Roma Show for 2025. The show will be held at Bassett Park on the second weekend of May. The Roma Show is the largest in our region.*

*My favourite thing at the Roma Show is.....*

### **Class 1804 Years Five & Year Six & Teacher entry**

#### **TEXT TO BE WRITTEN**

*The Roma Show Society is hosting the 139th annual Roma Show for 2025. The show will be held at Bassett Park on the second weekend of May. The Roma Show is the largest in our region. There will be fun and activities for everyone, including children's entertainment, fashion parade, sideshow alley, live music, fireworks and more!*

*My favourite thing at the Roma Show is.....*

## **SECTION 18 - Youth Exhibits -**

### **ENTRIES:**

ENTRIES CLOSE Wednesday 6th May 2025 at 3:00 PM – NO LATE ENTRIES WILL BE ACCEPTED

Entry Fee: Free

Entries must be submitted to: Roma Show Office

41 Arthur Street

Roma 4455

### **RIBBONS, TROPHIES AND PRIZE MONEY:**

#### **PRIZE MONEY**

**First:** Class One \$10.00, Class Two \$10.00, Class Three \$10.00,  
Class Four A \$10.00, Class Four B \$10.00 (incl gst)

**Second:** Class One \$7.00, Class Two \$7.00, Class Three \$7.00,  
Class Four A \$7.00, Class Four B \$7.00 (incl gst)

**Third:** Class One \$5.00, Class Two \$5.00, Class Three \$5.00,  
Class Four A \$5.00, Class Four B \$5.00 (inc gst)

**Champion ribbon: awarded to the best entry in Classes One and Two**

**Champion ribbon: awarded to the best entry in Classes Three and Four**

### **RULES & REGULATIONS:**

In addition to the Roma Show Society Rules & Regulations listed at the front of the main schedule, the following will apply to this section.

1. The Youth Exhibits Section is restricted to students enrolled in Years 7, 8, 9 or 10 not Years 11 and 12.
2. The following students are eligible for this section:
  - a. students currently attending Surat, Wallumbilla, Injune, Roma or Mitchell schools, and/or
  - b. students currently attending boarding schools but who reside in the areas mentioned above, and/or
  - c. students currently enrolled through SDE (School of Distance Education).
3. All entries to be clearly identified with name, school and year level.
4. Exhibits must be the bona-fide work of the exhibitor.
5. Prize money allocated is minimum; additional prizes may be awarded according to entry numbers.
6. All care will be taken with entries, but no responsibility will be accepted for damage or loss of entries.
7. If the judge decides that none of the entries are worthy, then no prize will be awarded.
8. Pavilion will close at 5.00 pm on Saturday of the show and entries may be collected after 5:00 pm (or when sorting out has been completed).
9. All prize money is to be collected from the Main office between 4pm and 6pm on Saturday 9th May. After this time, any unclaimed prize money will be dealt with in accordance with legislative requirements. At all times, it is the sole responsibility of the winner to collect his or her prize.
10. Competitors Declaration - All competitors and exhibitors have read and understand the Rules and Regulations and agree to be bound in all respects by these Rules and Regulations. Competitors and exhibitors also consent and agree that the Roma Show Society has the right to take or use photographs of him or her (and/or your property) and use the photos in any and all marketing and media worldwide, including online, now and in the future. All entrants compete at their own risk. No claim in any form shall be made by the entrant, their families, friends and/or representative against the Roma Show Society or person/s associated with the holding of the competition/exhibit.

**\*\*\*\*\*PLEASE NOTE: Schedules are subject to change at any time and without notice\*\*\*\*\***

# Metalwork, Woodwork & Visual Literacy

## **Class 1850 Metalwork**

Any item made by a student using mainly metal.

## **Class 1851 Woodwork**

Any item made by a student using mainly wood.

Champion Metalwork & Woodwork

## **Class 1852 Visual Literacy**

- Create a visually appealing computer-generated poster to showcase an iconic show attraction.

### ENTRY REQUIREMENTS

Include:

- a name of the attraction (e.g. Showjumping ring, fashion show, fireworks, etc.)
- list the keys features of the attraction.
- the dates for this year's Roma Show
- the logo for the Roma Show
- Clarity of images is important as your poster will be on display

Maximum Size: A3

## Handwriting

1. Use A4 blue-lined paper.
2. Text is to be handwritten in black or blue pen on every second line.
3. The margin may either be preprinted on the blue-lined paper or handwritten in black or blue pen.
4. The student's name, school and year level must be clearly written on the back of the handwriting entry.
5. Punctuation and spelling are very important; however, the standard of the handwriting will ultimately determine First Place.

Handwrite the following text –

### Five Reasons Handwriting Will Stay

Parents may be wondering whether the time-consuming and challenging process of learning to handwrite is worth the trouble. Perhaps the effort spent learning to form letters would be better spent on coding? There are still a number of important reasons why handwriting will still be taught in schools.

#### 1. Fine motor skills

Handwriting develops critical fine motor skills and the coordination needed to control precise movements. These movements are required to conduct everyday school and work-related activities. The refinement of these motor skills also leads to handwriting becoming increasingly legible and fluent. Handwriting may be more important than ever if tests and exams return to being handwritten to stop students using generative AI to cheat.

#### 2. It helps you remember

Handwriting has important cognitive benefits, including for memory. Research suggests traditional pen-and-paper notes are remembered better, due to the greater complexity of the handwriting process. And learning to read and handwrite are intimately linked. Students become better readers through practicing writing.

#### 3. It's good for well-being

Handwriting, and related activities such as drawing, are tactile, creative and reflective sources of pleasure and wellness for writers of all ages. This is seen in the popularity of practices such as print journaling and calligraphy. There are many online communities where writers share gorgeous examples of handwriting.

#### 4. It's very accessible

Handwriting does not need electricity, devices, batteries, software, subscriptions, a fast internet connection, a keyboard, charging time or the many other things on which digital writing depends. It only needs pen and paper and can be done anywhere.

5. It's about thinking

Most importantly, learning to write and learning to think are intimately connected. Ideas are formed as students write. They are developed and organized as they are composed.

Thinking is too important to be outsourced to bots!

Handwriting will remain important for the foreseeable future, despite the astonishing advances made with generative AI. Writing perfect cursive may become less important in the future but students will still need to be able to write legibly and fluently in their education and in their broader lives.

**Class 1853** Handwriting Years Seven and Eight

**Class 1854** Handwriting Years Nine and Ten

Champion Visual Literacy & Handwriting

**Disclaimer:**

Whilst every care has been taken in the preparation of this Schedule, the Roma Show Society accepts no liability for any errors, omissions or misprints. The Committee reserves the right to correct any errors and alter the Schedule where circumstances require.

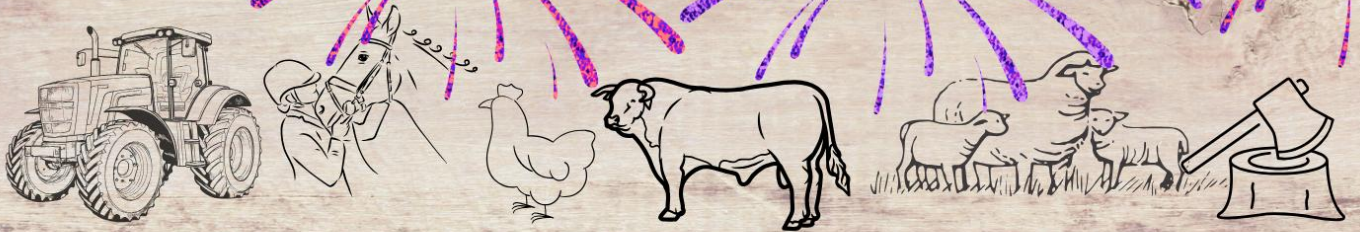
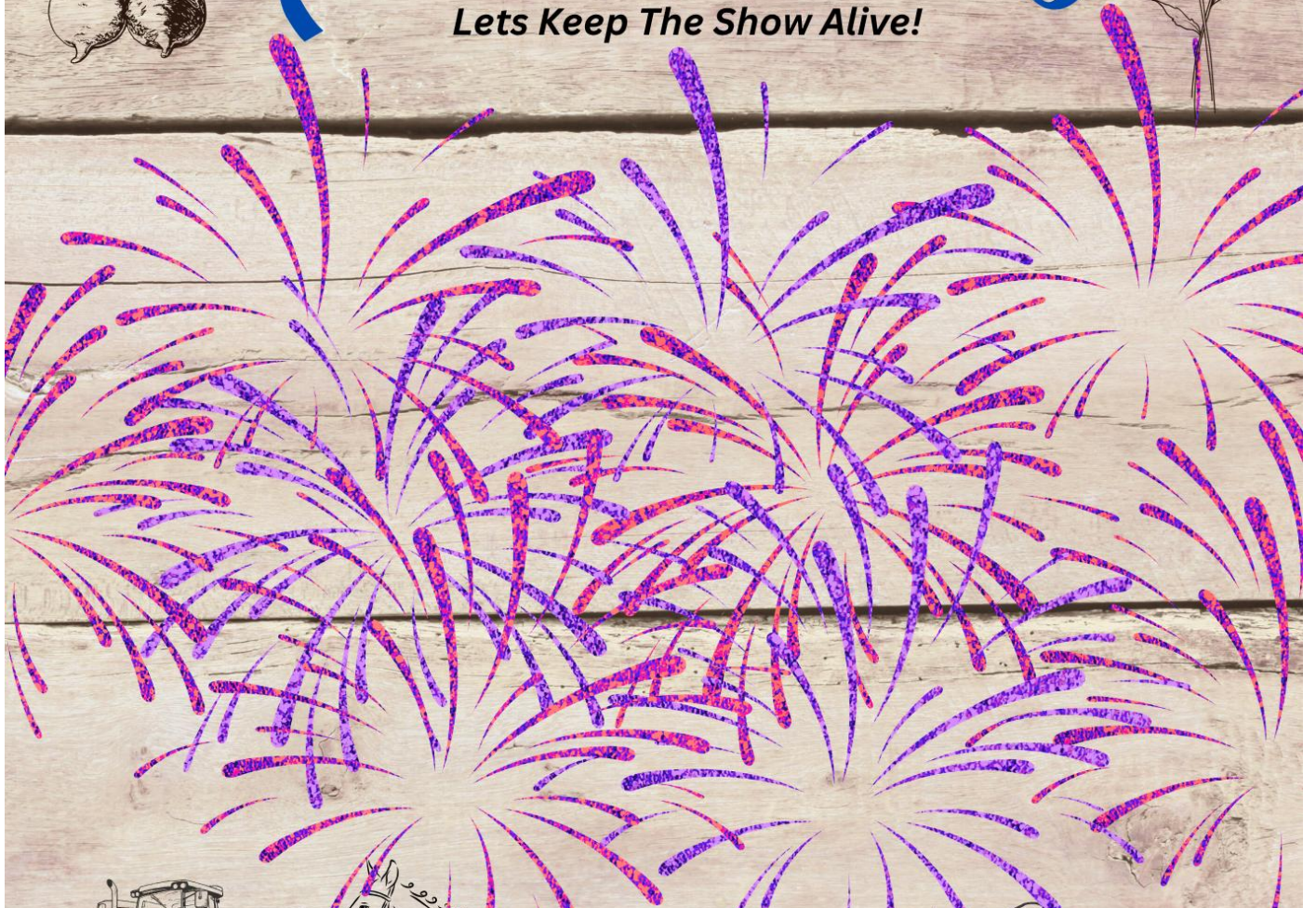


# Roma Show

# 7-9TH MAY 2026

Since 1873

*Lets Keep The Show Alive!*



**Horse ring events, Showjumping, Stockmens Challenge, Cattle inc Brangus Feature show, sheep, Poultry, Farm & Garden, Horticulture, Art, Crafts, Cooking, Woodchop, Farmers Challenge, Tractor Pull, Tug a War, showgirl and Rural Ambassador Competitions.**



*2 full days of entertainment, market stalls, food and rides*